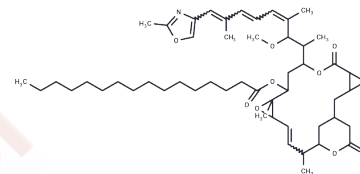


Palmitoyl rhizoxin

Chemical Properties

CAS No. :	135819-69-1
Formula:	C ₅₁ H ₇₇ N ₃ O ₁₀
Molecular Weight:	864.174
Storage:	Powder: -20°C for 3 years In solvent: -80°C for 1 year Actual storage temperature shall be subject to the COA.



Biological Description

Description	Palmitoyl rhizoxin is a highly lipophilic antitumor compound that acts by inhibiting tubulin polymerization and has stronger in vivo activity than rhizoxin.
Targets(IC50)	Others

Preparing Stock Solutions

	1mg	5mg	10mg
1 mM	1.1572 mL	5.7859 mL	11.5718 mL
5 mM	0.2314 mL	1.1572 mL	2.3144 mL
10 mM	0.1157 mL	0.5786 mL	1.1572 mL
50 mM	0.0231 mL	0.1157 mL	0.2314 mL

Please select the appropriate solvent to prepare the stock solution, according to the solubility of the product in different solvents. Please use it as soon as possible.

Note: The dilution table applies only to solid products. For liquid products, please calculate the stock solution based on the stated concentration and/or density.

Reference

Kurihara A, Shibayama Y, Mizota A, Yasuno A, Ikeda M, Hisaoka M. Pharmacokinetics of highly lipophilic antitumor agent palmitoyl rhizoxin incorporated in lipid emulsions in rats. *Biol Pharm Bull.* 1996 Feb;19(2):252-8. PubMed PMID: 8850317.

Tokui T, Kuroiwa C, Tokui Y, Sasagawa K, Kawai K, Kobayashi T, Ikeda T, Komai T. Contribution of serum lipoproteins as carriers of antitumor agent RS-1541 (palmitoyl rhizoxin) in mice. *Biopharm Drug Dispos.* 1994 Mar;15(2):93-107. PubMed PMID: 8011970.

Kurihara A, Shibayama Y, Kasuya A, Ikeda M, Hisaoka M. Species variation in pharmacokinetics and opsonization of palmitoyl rhizoxin (RS-1541) incorporated in lipid emulsions. *J Drug Target.* 1998;5(6):491-505. PubMed PMID: 9783680.

Kurihara A, Shibayama Y, Mizota A, Yasuno A, Ikeda M, Sasagawa K, Kobayashi T, Hisaoka M. Enhanced tumor delivery and antitumor activity of palmitoyl rhizoxin using stable lipid emulsions in mice. *Pharm Res.* 1996 Feb;13(2):305-10. PubMed PMID: 8932454.

Inhibitor · Natural Compounds · Compound Libraries · Recombinant Proteins

This product is for Research Use Only · Not for Human or Veterinary or Therapeutic Use

Tel:781-999-4286 E_mail:info@targetmol.com Address:34 Washington Street,Wellesley Hills,MA 02481