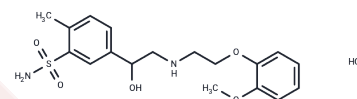


Amosulalol HCl

Chemical Properties

CAS No. :	93633-92-2
Formula:	C ₁₈ H ₂₅ ClN ₂ O ₅ S
Molecular Weight:	416.92
Storage:	Powder: -20°C for 3 years In solvent: -80°C for 1 year Actual storage temperature shall be subject to the COA.



Biological Description

Description	Amosulalol Hydrochloride, an alpha- and beta-adrenergic receptor antagonist, is used to treat hypertension.
Targets(IC50)	Others

Preparing Stock Solutions

	1mg	5mg	10mg
1 mM	2.3985 mL	11.9927 mL	23.9854 mL
5 mM	0.4797 mL	2.3985 mL	4.7971 mL
10 mM	0.2399 mL	1.1993 mL	2.3985 mL
50 mM	0.048 mL	0.2399 mL	0.4797 mL

Please select the appropriate solvent to prepare the stock solution, according to the solubility of the product in different solvents. Please use it as soon as possible.

Note: The dilution table applies only to solid products. For liquid products, please calculate the stock solution based on the stated concentration and/or density.

Reference

- Suzuki K, Kamimura H. Pharmacokinetics and metabolism of an alpha,beta-blocker, amosulalol hydrochloride, in mice: biliary excretion of carbamoyl glucuronide. *Biol Pharm Bull.* 2007 Aug;30(8):1580-5. PubMed PMID: 17666826.
- Sasaki H, Kamimura H, Kaniwa H, Kawamura S, Takaichi M, Yokoshima T. Disposition and metabolism of amosulalol hydrochloride, a new combined alpha- and beta-adrenoceptor blocking agent, in rats, dogs and monkeys. *Xenobiotica.* 1984 Aug;14(8):621-31. PubMed PMID: 6149657.
- Kamimura H, Sasaki H, Kawamura S. Metabolism of amosulalol hydrochloride in man: quantitative comparison with laboratory animals. *Xenobiotica.* 1985 May;15(5):413-20. PubMed PMID: 3929481.
- Tanaka S, Miyabe M, Ohyama I, Seki S, Tsukamoto T, Namiki A. [Sevoflurane with continuous epidural anesthesia for removal of pheochromocytoma]. *Masui.* 1991 Aug;40(8):1261-4. Japanese. PubMed PMID: 1920806.

Inhibitor · Natural Compounds · Compound Libraries · Recombinant Proteins

This product is for Research Use Only · Not for Human or Veterinary or Therapeutic Use

Tel:781-999-4286 E_mail:info@targetmol.com Address:34 Washington Street,Wellesley Hills,MA 02481