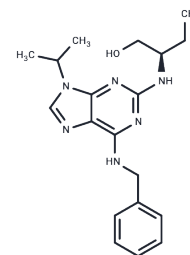


Seliciclib

Chemical Properties

CAS No. :	186692-46-6
Formula:	C ₁₉ H ₂₆ N ₆ O
Molecular Weight:	354.45
Storage:	Store at low temperature Powder: -20°C for 3 years In solvent: -80°C for 1 year <small>Actual storage temperature shall be subject to the COA.</small>



Biological Description

Description	Seliciclib (Roscovitine) is a potent inhibitor of Cdk2/cyclin E (IC ₅₀ =0.1 μM). Seliciclib also inhibits Cdk7/cyclin H, Cdk5/p35 and Cdc2/cyclin B (IC ₅₀ =0.49/0.16/0.65 μM). Seliciclib has antitumor activity.
Targets(IC ₅₀)	CDK
In vitro	<p>METHODS: MM cell lines MM.1S, OPM2, RPMI, U266, Dox-40, LR5, MM1.R were treated with Seliciclib (10-100 μM) for 24 h. Cell viability was measured by MTT assay.</p> <p>RESULTS: Seliciclib produced dose-dependent cytotoxicity within 24 h with an IC₅₀ in the range of 15-25 μM.[1]</p> <p>METHODS: Mantle cell lymphoma (MCL) cells Granta-519, NCEB-1, REC-1, and JeKo-1 were treated with Seliciclib (25-50 μM) for 24-48 h. Cell cycle was detected by Flow cytometry.</p> <p>RESULTS: Accumulation of G2-M phase cells was detected in Granta-519, NCEB-1 and REC-1 cells after treatment with Seliciclib at IC₅₀ dose for 24 h, and JeKo-1 cells at 48 h as compared to controls. After treatment with Seliciclib for 24 and 48 h, sub-G1 peaks were significantly increased in all cells except Granta-519, indicating apoptosis. [2]</p>
In vivo	<p>METHODS: To assay antitumor activity in vivo, Seliciclib (300 mg/kg/d) was administered orally to B6D2F1 mice bearing Glasgow osteosarcoma at Zeitgeber time (ZT) 3, 11, or 19 for 5 days.</p> <p>RESULTS: Seliciclib reduced tumor growth by 55% after ZT3 or ZT11 administration and by 35% after ZT19 administration compared with controls. [3]</p>
Kinase Assay	Kinases activities were assayed at 30°C in buffer C (unless otherwise specified). Blank values were subtracted from the data and activities calculated as the molar amount of phosphate incorporated in protein acceptor during a 10-min incubation. Controls were performed with appropriate dilutions of Me2SO. In a few cases, phosphorylation of the substrate was assessed by autoradiography after SDS/PAGE [1].
Cell Research	L1210 cells taken from exponentially growing cultures in RPMT-1640 medium supplemented with 10% foetal calf serum, penicillin and streptomycin, were counted using a hemocytometer, seeded at 5X10 ⁴ cells/ml in tissue-culture 96-wells plates in the presence or absence of various concentrations of roscovitine or olomoucine and incubated at 37°C under 5% CO ₂ . For reversion of the roscovitine effect, L1210 cells cultured two days in the presence or absence of roscovitine were washed in phosphate-buffered saline to remove any trace of the drug, counted and reseeded in fresh medium

Cell Research	containing no drug. Cell growth was monitored daily using the microculture tetrazolium assay. Cell cycle analysis was performed on cells that were fixed in ethanol, treated with 100 µg/ml RNase and stained with propidium iodide. We used a Coulter EPICS Elite flow cytometer for acquisition and the Multicycle software for analysis of the data. All assays were performed in triplicate and experiments repeated at least twice [1].
Animal Research	Male athymic nude mice (5-6 weeks old) were obtained from the National Cancer Institute. Mice were housed in the animal facilities of the Georgetown University Division of Comparative Medicine. All animal work was done under protocols approved by the Georgetown University Animal Care and Use Committee. Mice were inoculated s.c. into the right posterior flank with 4×10^6 A4573 cells in 100 µL of Matrigel basement membrane matrix. Xenografts were grown to a mean tumor volume of $129 \pm 30 \text{ mm}^3$. Roscovitine was first dissolved in either absolute methanol or DMSO (1 volume). A carrier solution was produced by using a diluent containing 10% Tween 80, 20% N-N-dimethylacetamide, and 70% polyethylene glycol 400. Mice were randomized into two groups (six animals per group) and treatment was initiated. One group was treated with roscovitine, administered as a single daily i.p. injection, at a dose of 50 mg/kg, for either 5 days or two 5-day series with a 2-day break in between. The control group received i. p. injections of the carrier solution following identical schedules. All mice were sacrificed by asphyxiation with CO ₂ . Roscovitine-treated mice were euthanized either 7 days after the first injection or up to 4 weeks after completion of the treatment. At those times, tumors were removed, measured, and prepared for TUNEL assays. Primary tumor volumes were calculated by the formula $V = (1/2)a \times b^2$, where a is the longest tumor axis and b is the shortest tumor axis. Data are given as mean values \pm SE in quantitative experiments. Statistical analysis of differences between groups was done by a one-way ANOVA followed by an unpaired Student's t-test [4].

Solubility Information

Solubility	H ₂ O: < 1 mg/mL (insoluble or slightly soluble), DMSO: 47.5 mg/mL (134.01 mM),Sonication is recommended. Ethanol: 6 mg/mL (16.93 mM),Sonication is recommended. (< 1 mg/ml refers to the product slightly soluble or insoluble)
In vivo Formulation	10% DMSO+40% PEG300+5% Tween-80+45% Saline: 3.3 mg/mL (9.31 mM),Sonication is recommended. <i>Please add the solvents sequentially, clarifying the solution as much as possible before adding the next one. Dissolve by heating and/or sonication if necessary. Working solution is recommended to be prepared and used immediately. The formulation provided above is for reference purposes only. In vivo formulations may vary and should be modified based on specific experimental conditions.</i>

Preparing Stock Solutions

	1mg	5mg	10mg
1 mM	2.8213 mL	14.1064 mL	28.2127 mL
5 mM	0.5643 mL	2.8213 mL	5.6425 mL
10 mM	0.2821 mL	1.4106 mL	2.8213 mL
50 mM	0.0564 mL	0.2821 mL	0.5643 mL

Please select the appropriate solvent to prepare the stock solution, according to the solubility of the product in different solvents. Please use it as soon as possible.

Note: The dilution table applies only to solid products. For liquid products, please calculate the stock solution based on the stated concentration and/or density.

Reference

- Raje N, et al. Seliciclib (CYC202 or R-roscovitine), a small-molecule cyclin-dependent kinase inhibitor, mediates activity via down-regulation of Mcl-1 in multiple myeloma. *Blood*. 2005 Aug 1;106(3):1042-7.
- Li Q, Zhou Y, He W, et al. Platelet-armed nanoplatform to harmonize janus-faced IFN- γ against tumor recurrence and metastasis. *Journal of Controlled Release*. 2021
- Ou J, Li H, Qiu P, et al. CDK9 modulates circadian clock by attenuating REV-ERB α activity. *Biochemical and Biophysical Research Communications*. 2019 Jun 11;513(4):967-973
- Lacrima K, et al. In vitro activity of cyclin-dependent kinase inhibitor CYC202 (Seliciclib, R-roscovitine) in mantle cell lymphomas. *Ann Oncol*. 2005 Jul;16(7):1169-76.
- Iurisci I, et al. Improved tumor control through circadian clock induction by Seliciclib, a cyclin-dependent kinase inhibitor. *Cancer Res*. 2006 Nov 15;66(22):10720-8.
- Liang X L, Ouyang L, Yu N N, et al. Histone deacetylase inhibitor pracinostat suppresses colorectal cancer by inducing CDK5-Drp1 signaling-mediated peripheral mitofission. *Journal of Pharmaceutical Analysis*. 2023
- Jiang L, Yu Y, Li Z, et al. BMS-265246, a Cyclin-Dependent Kinase Inhibitor, Inhibits the Infection of Herpes Simplex Virus Type 1. *Viruses*. 2023, 15(8): 1642.
- Tirado OM, et al. Roscovitine is an effective inducer of apoptosis of Ewing's sarcoma family tumor cells in vitro and in vivo. *Cancer Res*. 2005 Oct 15;65(20):9320-7.
- Ren Y, Wu X, Bai T, et al. CDK5-USP30 signaling pathway regulates MAVS-mediated inflammation via suppressing mitophagy in MPTP/MPP+ PD model. *Ecotoxicology and Environmental Safety*. 2024, 279: 116446.
- Ou J, Li H, Qiu P, et al. CDK9 modulates circadian clock by attenuating REV-ERB α activity[J]. *Biochemical and Biophysical Research Communications*. 2019 Jun 11;513(4):967-973.

Inhibitor · Natural Compounds · Compound Libraries · Recombinant Proteins

This product is for Research Use Only · Not for Human or Veterinary or Therapeutic Use

Tel: 781-999-4286 E_mail: info@targetmol.com Address: 34 Washington Street, Wellesley Hills, MA 02481