

Columbianadin

Chemical Properties

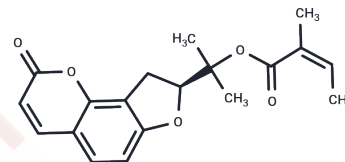
CAS No. : 5058-13-9

Formula: C₁₉H₂₀O₅

Molecular Weight: 328.36

Storage: Powder: -20°C for 3 years | In solvent: -80°C for 1 year

Actual storage temperature shall be subject to the COA.



Biological Description

Description	Columbianadin (Zosimin), one of the main bioactive constituents of the roots of <i>Angelica pubescens</i> Maxim. f. <i>biserrata</i> Shan et Yuan, has been found to possess obvious pharmacological effects in previous studies.
Targets(IC50)	Apoptosis
Kinase Assay	Cells are treated with various concentrations of Dihydropantoinone I (3.13-20 μ M) for 48 h. For the activity assay, Ac-DEVD-AMC (1 μ g/ μ L), Ac-IETD-AMC (1 μ g/ μ L) or Ac-LEDH-AMC (1 μ g/ μ L) and cell lysate are added into Protease Assay Buffer in 96-well plate. Reaction mixtures with lysis buffer are used as negative controls. Cells treated with DMSO (0.1%) are treated as vehicle control. The reaction mixtures are incubated for 1 h at 37°C. The AMC liberated from the substrates is measured using spectrofluorometer of Victor 2 plate reader with an excitation wavelength of 380 nm and an emission wavelength of 430 nm.

Solubility Information

Solubility	Chloroform: Soluble, DMSO: 59 mg/mL (179.68 mM),Sonication is recommended. (< 1 mg/ml refers to the product slightly soluble or insoluble)
In vivo Formulation	10% DMSO+90% Corn Oil: 3.3 mg/mL (10.05 mM),Sonication is recommended. <i>Please add the solvents sequentially, clarifying the solution as much as possible before adding the next one. Dissolve by heating and/or sonication if necessary. Working solution is recommended to be prepared and used immediately. The formulation provided above is for reference purposes only. In vivo formulations may vary and should be modified based on specific experimental conditions.</i>

Preparing Stock Solutions

	1mg	5mg	10mg
1 mM	3.0454 mL	15.2272 mL	30.4544 mL
5 mM	0.6091 mL	3.0454 mL	6.0909 mL
10 mM	0.3045 mL	1.5227 mL	3.0454 mL
50 mM	0.0609 mL	0.3045 mL	0.6091 mL

Please select the appropriate solvent to prepare the stock solution, according to the solubility of the product in different solvents. Please use it as soon as possible.

Note: The dilution table applies only to solid products. For liquid products, please calculate the stock solution based on the stated concentration and/or density.

Reference

- Zhang YB, et al. Biomedical Chromatography, 2016, 30(2):256-262;
Zhang YB, et al. Biomed Chromatogr. 2010 Apr;24(4):433-7.

Inhibitor · Natural Compounds · Compound Libraries · Recombinant Proteins

This product is for Research Use Only · Not for Human or Veterinary or Therapeutic Use

Tel:781-999-4286 E_mail:info@targetmol.com Address:34 Washington Street,Wellesley Hills,MA 02481