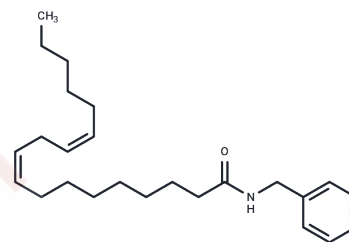


## N-Benzyllinoleamide

## Chemical Properties

|                   |   |
|-------------------|---|
| CAS No. :         | 18286-71-0  |
| Formula:          | C <sub>25</sub> H <sub>39</sub> NO  |
| Molecular Weight: | 369.58  |
| Storage:          | Powder: -20°C for 3 years   In solvent: -80°C for 1 year<br>Actual storage temperature shall be subject to the COA. |



## Biological Description

|               |   |
|---------------|---|
| Description   | N-Benzyllinoleamide ((9Z,12Z)-N-Benzyloctadeca-9,12-dienamide) is a natural product isolated from <i>Lepidium meyenii</i> Walp, has pharmaceutical property against exercise-induced fatigue. |
| Targets(IC50) | Others  |

## Solubility Information

|                     |  |
|---------------------|--|
| Solubility          | DMSO: 25 mg/mL (67.64 mM), Sonication is recommended.<br>( $< 1$ mg/ml refers to the product slightly soluble or insoluble)  |
| In vivo Formulation | 10% DMSO+90% Corn Oil: 2 mg/mL (5.41 mM), Sonication is recommended.<br><i>Please add the solvents sequentially, clarifying the solution as much as possible before adding the next one. Dissolve by heating and/or sonication if necessary. Working solution is recommended to be prepared and used immediately. The formulation provided above is for reference purposes only. In vivo formulations may vary and should be modified based on specific experimental conditions.</i> |

## Preparing Stock Solutions

|       | 1mg       | 5mg        | 10mg       |
|-------|-----------|------------|------------|
| 1 mM  | 2.7058 mL | 13.5289 mL | 27.0577 mL |
| 5 mM  | 0.5412 mL | 2.7058 mL  | 5.4115 mL  |
| 10 mM | 0.2706 mL | 1.3529 mL  | 2.7058 mL  |
| 50 mM | 0.0541 mL | 0.2706 mL  | 0.5412 mL  |

Please select the appropriate solvent to prepare the stock solution, according to the solubility of the product in different solvents. Please use it as soon as possible.

Note: The dilution table applies only to solid products. For liquid products, please calculate the stock solution based on the stated concentration and/or density.

**Inhibitor · Natural Compounds · Compound Libraries · Recombinant Proteins**

This product is for Research Use Only · Not for Human or Veterinary or Therapeutic Use

Tel:781-999-4286 E\_mail:info@targetmol.com Address:34 Washington Street,Wellesley Hills,MA 02481