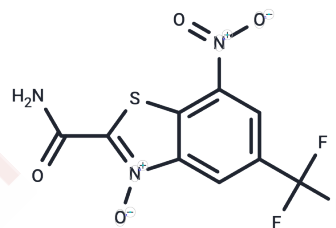


Cyclapolin 9

Chemical Properties

CAS No. :	40533-25-3
Formula:	C ₉ H ₄ F ₃ N ₃ O ₄ S
Molecular Weight:	307.21
Storage:	Powder: -20°C for 3 years In solvent: -80°C for 1 year Actual storage temperature shall be subject to the COA.



Biological Description

Description	Cyclapolin 9 is a selective, potent, and ATP-competitive inhibitor of polo-like kinase 1 (PLK1) with an IC ₅₀ of 500 nM, and has not shown activity against other kinases.
Targets(IC ₅₀)	PLK
In vitro	Reducing electric field stimulation (EFS)-induced contractions of prostate strips, Cyclapolin 9 (3 μM) has the ability to inhibit α1-adrenergic smooth muscle contraction in the human prostate[1]

Solubility Information

Solubility	Ethanol: < 1 mg/mL (insoluble or slightly soluble), DMSO: 10 mg/mL (32.55 mM), Sonication is recommended. (< 1 mg/ml refers to the product slightly soluble or insoluble)
------------	---

Preparing Stock Solutions

	1mg	5mg	10mg
1 mM	3.2551 mL	16.2755 mL	32.551 mL
5 mM	0.651 mL	3.2551 mL	6.5102 mL
10 mM	0.3255 mL	1.6276 mL	3.2551 mL
50 mM	0.0651 mL	0.3255 mL	0.651 mL

Please select the appropriate solvent to prepare the stock solution, according to the solubility of the product in different solvents. Please use it as soon as possible.

Note: The dilution table applies only to solid products. For liquid products, please calculate the stock solution based on the stated concentration and/or density.

Reference

Martin Hennenberg, et al. Inhibition of Prostate Smooth Muscle Contraction by Inhibitors of Polo-Like Kinases. Front Physiol. 2018 Jun 15;9:734.

Campbell McInnes, et al. Inhibitors of Polo-like kinase reveal roles in spindle-pole maintenance. Nat Chem Biol. 2006 Nov;2(11):608-17.

Inhibitor · Natural Compounds · Compound Libraries · Recombinant Proteins

This product is for Research Use Only· Not for Human or Veterinary or Therapeutic Use

Tel:781-999-4286 E_mail:info@targetmol.com Address:34 Washington Street,Wellesley Hills,MA 02481