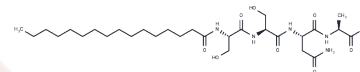


Palmitoyl tetrapeptide

Chemical Properties

CAS No. :	90877-69-3
Formula:	C ₂₉ H ₅₃ N ₅ O ₉
Molecular Weight:	615.76
Storage:	Keep away from moisture Powder: -20°C for 3 years In solvent: -80°C for 1 year <small>Actual storage temperature shall be subject to the COA.</small>



Biological Description

Description	Palmitoyl tetrapeptide is an analog of the N-terminal part of lipoprotein from the outer membrane of E. coli.
-------------	---

Preparing Stock Solutions

	1mg	5mg	10mg
1 mM	1.624 mL	8.120 mL	16.2401 mL
5 mM	0.3248 mL	1.624 mL	3.248 mL
10 mM	0.1624 mL	0.812 mL	1.624 mL
50 mM	0.0325 mL	0.1624 mL	0.3248 mL

Please select the appropriate solvent to prepare the stock solution, according to the solubility of the product in different solvents. Please use it as soon as possible.

Note: The dilution table applies only to solid products. For liquid products, please calculate the stock solution based on the stated concentration and/or density.

Reference

- Mondon P, Hillion M, Peschard O, Andre N, Marchand T, Doridot E, Feuilloley MG, Pionneau C, Chardonnet S. Evaluation of dermal extracellular matrix and epidermal-dermal junction modifications using matrix-assisted laser desorption/ionization mass spectrometric imaging, in vivo reflectance confocal microscopy, echography, and histology: effect of age and peptide applications. *J Cosmet Dermatol.* 2015 Jun;14(2):152-60. doi: 10.1111/jocd.12135. Epub 2015 Mar 27. PubMed PMID: 25817264.
- Hauschildt S, Wagner-Roos LM, Wiesmüller KH, Jung G, Bessler WG. Phosphatidylinositol metabolism and protein kinase C activation in leukocytes by lipopeptides. *Immunobiology.* 1988 Jul;177(3):267-77. PubMed PMID: 3169841.
- Bessler WG, Cox M, Wiesmüller KH, Jung G. The mitogenic principle of Escherichia coli lipoprotein: B-lymphocyte mitogenicity of the synthetic analogue palmitoyl-tetrapeptide (Pam-Ser-Ser-Asn-Ala). *Biochem Biophys Res Commun.* 1984 May 31;121(1):55-61. PubMed PMID: 6375670.

Inhibitor · Natural Compounds · Compound Libraries · Recombinant Proteins

This product is for Research Use Only · Not for Human or Veterinary or Therapeutic Use

Tel:781-999-4286 E_mail:info@targetmol.com Address:34 Washington Street,Wellesley Hills,MA 02481