

PLP (139-151)

Chemical Properties

CAS No. : 131334-43-5

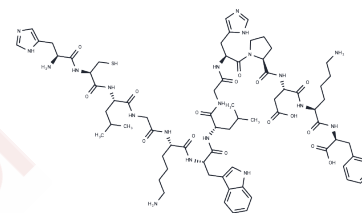
Formula: C72H104N20O16S

Molecular Weight: 1537.79

Keep away from moisture

Storage: Powder: -20°C for 3 years | In solvent: -80°C for 1 year

Actual storage temperature shall be subject to the COA.



Biological Description

Description

PLP (139-151) is an amino acid fragment from positions 139 to 151 of myelin proteolipid protein (PLP), which is used to induce the relapsing-remitting experimental autoimmune encephalomyelitis (RR-EAE) model.

Solubility Information

Solubility

H2O: 50 mg/mL (32.51 mM), Sonication is recommended.
(< 1 mg/ml refers to the product slightly soluble or insoluble)

Preparing Stock Solutions

	1mg	5mg	10mg
1 mM	0.6503 mL	3.2514 mL	6.5028 mL
5 mM	0.1301 mL	0.6503 mL	1.3006 mL
10 mM	0.065 mL	0.3251 mL	0.6503 mL
50 mM	0.013 mL	0.065 mL	0.1301 mL

Please select the appropriate solvent to prepare the stock solution, according to the solubility of the product in different solvents. Please use it as soon as possible.

Note: The dilution table applies only to solid products. For liquid products, please calculate the stock solution based on the stated concentration and/or density.

Reference

Kuchroo VK, et al. Induction of experimental allergic encephalomyelitis by myelin proteolipid-protein-specific T cell clones and synthetic peptides. Pathobiology. 1991;59(5):305-12.

Inhibitor · Natural Compounds · Compound Libraries · Recombinant Proteins

This product is for Research Use Only · Not for Human or Veterinary or Therapeutic Use

Tel: 781-999-4286

E_mail: info@targetmol.com

Address: 34 Washington Street, Wellesley Hills, MA 02481