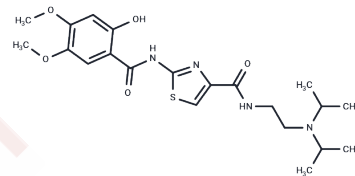


Acotiamide

Chemical Properties

CAS No. :	185106-16-5
Formula:	C ₂₁ H ₃₀ N ₄ O ₅ S
Molecular Weight:	450.55
Storage:	Powder: -20°C for 3 years In solvent: -80°C for 1 year Actual storage temperature shall be subject to the COA.



Biological Description

Description	Acotiamide is an orally active, selective, and reversible acetylcholinesterase (AChE) inhibitor with an IC ₅₀ of 1.79 μM. It is a gastroprokinetic agent that enhances gastric contractility and accelerates delayed gastric emptying, with potential for research in functional dyspepsia involving gastric motility dysfunction and intestinal inflammatory [1] [2] [3].
Targets(IC50)	Others,Cholinesterase (ChE)
In vitro	Acotiamide (10, 30, 100 μM; 1 hour) significantly reduces IκB-α phosphorylation levels in LPS- and MCP-1-activated NR8383 macrophage cell lines, leading to a noticeable decrease in TNF-α and IL-6 production, as observed in Cell Viability Assays [1].
In vivo	Acotiamide demonstrates a dose-dependent enhancement in postprandial gastric motility indices when administered either intravenously (0.3, 1, 3 mg/kg) or orally (3, 10, 30 mg/kg) [2]. A single intravenous dose (0.83 mg/kg) of acotiamide significantly inhibits acetylcholinesterase (AChE) activity in the rat stomach, with an IC ₅₀ value of 1.79 μM, thereby potentially improving functional dyspepsia [3]. These findings were observed in experiments involving male mongrel dogs weighing 9-11 kg and male beagle dogs weighing 9.6-12.9 kg for the gastric motility study [2], and male Sprague-Dawley rats aged 6-7 weeks for the AChE inhibition study [3]. The results indicate acotiamide's effectiveness in increasing postprandial gastric motility and inhibiting AChE in the stomach, evidenced by detailed animal models and specific dosage administrations.

Preparing Stock Solutions

	1mg	5mg	10mg
1 mM	2.2195 mL	11.0975 mL	22.1951 mL
5 mM	0.4439 mL	2.2195 mL	4.439 mL
10 mM	0.222 mL	1.1098 mL	2.2195 mL
50 mM	0.0444 mL	0.222 mL	0.4439 mL

Please select the appropriate solvent to prepare the stock solution, according to the solubility of the product in different solvents. Please use it as soon as possible.

Note: The dilution table applies only to solid products. For liquid products, please calculate the stock solution based on the stated concentration and/or density.

Inhibitor · Natural Compounds · Compound Libraries · Recombinant Proteins

This product is for Research Use Only · Not for Human or Veterinary or Therapeutic Use

Tel:781-999-4286 E_mail:info@targetmol.com Address:34 Washington Street,Wellesley Hills,MA 02481