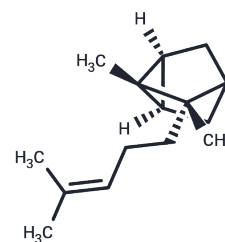


Santalene

Chemical Properties

CAS No. :	512-61-8
Formula:	C ₁₅ H ₂₄
Molecular Weight:	204.357
Storage:	Powder: -20°C for 3 years In solvent: -80°C for 1 year Actual storage temperature shall be subject to the COA.



Biological Description

Description	Santalene is a fragrance sesquiterpene that is responsible for the fragrance of sandalwood oil.
-------------	---

Preparing Stock Solutions

	1mg	5mg	10mg
1 mM	4.8933 mL	24.4666 mL	48.9333 mL
5 mM	0.9787 mL	4.8933 mL	9.7867 mL
10 mM	0.4893 mL	2.4467 mL	4.8933 mL
50 mM	0.0979 mL	0.4893 mL	0.9787 mL

Please select the appropriate solvent to prepare the stock solution, according to the solubility of the product in different solvents. Please use it as soon as possible.

Note: The dilution table applies only to solid products. For liquid products, please calculate the stock solution based on the stated concentration and/or density.

Reference

- Zhan X, Zhang YH, Chen DF, Simonsen HT. Metabolic engineering of the moss *Physcomitrella patens* to produce the sesquiterpenoids patchoulol and α/β -santalene. *Front Plant Sci.* 2014 Nov 18;5:636. doi: 10.3389/fpls.2014.00636. eCollection 2014. PubMed PMID: 25477891; PubMed Central PMCID: PMC4235272.
- Jindal G, Sunoj RB. Revisiting sesquiterpene biosynthetic pathways leading to santalene and its analogues: a comprehensive mechanistic study. *Org Biomol Chem.* 2012 Oct 21;10(39):7996-8006. PubMed PMID: 22951817.
- Tippmann S, Scalcinati G, Siewers V, Nielsen J. Production of farnesene and santalene by *Saccharomyces cerevisiae* using fed-batch cultivations with RQ-controlled feed. *Biotechnol Bioeng.* 2016 Jan;113(1):72-81. doi: 10.1002/bit.25683. Epub 2015 Sep 2. PubMed PMID: 26108688.
- Scalcinati G, Partow S, Siewers V, Schalk M, Daviet L, Nielsen J. Combined metabolic engineering of precursor and co-factor supply to increase α -santalene production by *Saccharomyces cerevisiae*. *Microb Cell Fact.* 2012 Aug 31;11:117. doi: 10.1186/1475-2859-11-117. PubMed PMID: 22938570; PubMed Central PMCID: PMC3527295.

Inhibitor · Natural Compounds · Compound Libraries · Recombinant Proteins

This product is for Research Use Only · Not for Human or Veterinary or Therapeutic Use

Tel:781-999-4286 E_mail:info@targetmol.com Address:34 Washington Street,Wellesley Hills,MA 02481