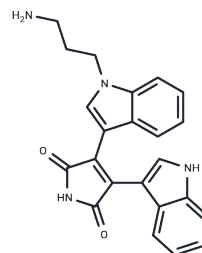


## Bisindolylmaleimide III

## Chemical Properties

CAS No. :	137592-43-9
Formula:	C <sub>23</sub> H <sub>20</sub> N <sub>4</sub> O <sub>2</sub>
Molecular Weight:	384.43
Storage:	Powder: -20°C for 3 years   In solvent: -80°C for 1 year Actual storage temperature shall be subject to the COA.



## Biological Description

Description	Bisindolylmaleimide III is a potent and selective inhibitor of protein kinase C (PKC), specifically interacting with PKC $\alpha$ or ribosomal S6 protein kinase 1 upon activation of these kinases.
Targets(IC50)	PKC

## Solubility Information

Solubility	DMSO: 45 mg/mL (117.06 mM), Sonication is recommended. ( $< 1$ mg/ml refers to the product slightly soluble or insoluble)
In vivo Formulation	10% DMSO+40% PEG300+5% Tween 80+45% Saline: 1 mg/mL (2.6 mM), Sonication is recommended. <i>Please add the solvents sequentially, clarifying the solution as much as possible before adding the next one. Dissolve by heating and/or sonication if necessary. Working solution is recommended to be prepared and used immediately. The formulation provided above is for reference purposes only. In vivo formulations may vary and should be modified based on specific experimental conditions.</i>

## Preparing Stock Solutions

	1mg	5mg	10mg
1 mM	2.6013 mL	13.0063 mL	26.0125 mL
5 mM	0.5203 mL	2.6013 mL	5.2025 mL
10 mM	0.2601 mL	1.3006 mL	2.6013 mL
50 mM	0.052 mL	0.2601 mL	0.5203 mL

Please select the appropriate solvent to prepare the stock solution, according to the solubility of the product in different solvents. Please use it as soon as possible.

Note: The dilution table applies only to solid products. For liquid products, please calculate the stock solution based on the stated concentration and/or density.

Reference

Brehmer D, et al. Proteome-wide identification of cellular targets affected by bisindolylmaleimide-type protein kinase C inhibitors. Mol Cell Proteomics. 2004 May;3(5):490-500.

Saito Y, et al. Role of ecto-kinase in phorbol ester-enhanced growth hormone-binding protein release from human IM-9 cells. Mol Cell Endocrinol. 1999 Jun 25;152(1-2):65-72.

**Inhibitor · Natural Compounds · Compound Libraries · Recombinant Proteins**

This product is for Research Use Only · Not for Human or Veterinary or Therapeutic Use

Tel:781-999-4286 E\_mail:info@targetmol.com Address:34 Washington Street,Wellesley Hills,MA 02481