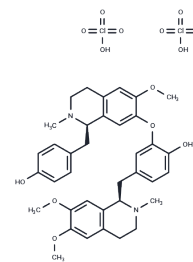


Liensinine diperchlorate

Chemical Properties

CAS No. : 5088-90-4
 Formula: C₃₇H₄₄Cl₂N₂O₁₄
 Molecular Weight: 811.67
 Storage: Powder: -20°C for 3 years | In solvent: -80°C for 1 year
Actual storage temperature shall be subject to the COA.



Biological Description

| | |
|---------------|--|
| Description | Liensinine Diperchlorate is an isoquinoline alkaloid extracted from the embryonic seeds of the sacred lotus. It inhibits late autophagy by blocking autophagosome-lysosome fusion and exhibits biological activities such as anti-arrhythmic, anti-hypertensive, anti-pulmonary fibrosis, and vascular smooth muscle relaxation. |
| Targets(IC50) | Mitophagy, Autophagy |

Solubility Information

| | |
|---------------------|---|
| Solubility | Pyridine, Methanol, etc.: Soluble, Ethanol: Soluble, DMSO: 250 mg/mL (308.01 mM), Sonication is recommended. (< 1 mg/ml refers to the product slightly soluble or insoluble) |
| In vivo Formulation | 10% DMSO+40% PEG300+5% Tween 80+45% Saline: 2 mg/mL (2.46 mM), Sonication is recommended. <i>Please add the solvents sequentially, clarifying the solution as much as possible before adding the next one. Dissolve by heating and/or sonication if necessary. Working solution is recommended to be prepared and used immediately. The formulation provided above is for reference purposes only. In vivo formulations may vary and should be modified based on specific experimental conditions.</i> |

Preparing Stock Solutions

| | 1mg | 5mg | 10mg |
|-------|------------|------------|-------------|
| 1 mM | 1.232 mL | 6.1601 mL | 12.3203 mL |
| 5 mM | 0.2464 mL | 1.232 mL | 2.4641 mL |
| 10 mM | 0.1232 mL | 0.616 mL | 1.232 mL |
| 50 mM | 0.0246 mL | 0.1232 mL | 0.2464 mL |

Please select the appropriate solvent to prepare the stock solution, according to the solubility of the product in different solvents. Please use it as soon as possible.

Note: The dilution table applies only to solid products. For liquid products, please calculate the stock solution based on the stated concentration and/or density.

Inhibitor · Natural Compounds · Compound Libraries · Recombinant Proteins

This product is for Research Use Only · Not for Human or Veterinary or Therapeutic Use

Tel:781-999-4286 E_mail:info@targetmol.com Address:34 Washington Street,Wellesley Hills,MA 02481