

## Cyclo(-RGDfC)acetate

### Chemical Properties

CAS No. :

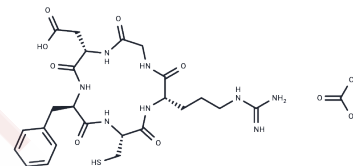
Formula: C<sub>26</sub>H<sub>38</sub>N<sub>8</sub>O<sub>9</sub>S

Molecular Weight: 638.69

Keep away from moisture

Storage: Powder: -20°C for 3 years | In solvent: -80°C for 1 year

Actual storage temperature shall be subject to the COA.



### Biological Description

Description	Cyclo(-RGDfC)acetate is an integrin avb3-affine polypeptide, a circular RGDfC sequence.
Targets(IC50)	Others

### Solubility Information

Solubility	H <sub>2</sub> O: insoluble DMSO: 45 mg/mL (70.46 mM), Sonication is recommended. ( < 1 mg/ml refers to the product slightly soluble or insoluble)
------------	--

### Preparing Stock Solutions

	1mg	5mg	10mg
1 mM	1.5657 mL	7.8285 mL	15.657 mL
5 mM	0.3131 mL	1.5657 mL	3.1314 mL
10 mM	0.1566 mL	0.7829 mL	1.5657 mL
50 mM	0.0313 mL	0.1566 mL	0.3131 mL

Please select the appropriate solvent to prepare the stock solution, according to the solubility of the product in different solvents. Please use it as soon as possible.

Note: The dilution table applies only to solid products. For liquid products, please calculate the stock solution based on the stated concentration and/or density.

### Reference

Klaus, Pollinger, Robert, et al. Kidney Podocytes as Specific Targets for cyclo(RGDfC)-Modified Nanoparticles[J]. Small, 2007.

**Inhibitor · Natural Compounds · Compound Libraries · Recombinant Proteins**

This product is for Research Use Only · Not for Human or Veterinary or Therapeutic Use

Tel:781-999-4286 E\_mail:info@targetmol.com Address:34 Washington Street,Wellesley Hills,MA 02481