

α 2 β 1 Integrin Ligand Peptide acetate

Chemical Properties

CAS No. :

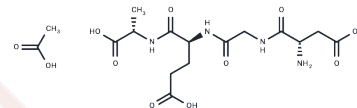
Formula: C16H26N4O11

Molecular Weight: 450.4

Keep away from moisture

Storage: Powder: -20°C for 3 years | In solvent: -80°C for 1 year

Actual storage temperature shall be subject to the COA.



Biological Description

Description	α 2 β 1 Integrin Ligand Peptide acetate (α 2 β 1 Integrin Ligand Peptide acetate (134580-64-6)) is a potential antagonist of α 2 β 1 integrin receptor. α 2 β 1 Integrin Ligand Peptide interacts with the α 2 β 1 integrin receptor on the cell membrane and mediates extracellular signals into cells.
Targets(IC50)	Integrin

Preparing Stock Solutions

	1mg	5mg	10mg
1 mM	2.2202 mL	11.1012 mL	22.2025 mL
5 mM	0.444 mL	2.2202 mL	4.4405 mL
10 mM	0.222 mL	1.1101 mL	2.2202 mL
50 mM	0.0444 mL	0.222 mL	0.444 mL

Please select the appropriate solvent to prepare the stock solution, according to the solubility of the product in different solvents. Please use it as soon as possible.

Note: The dilution table applies only to solid products. For liquid products, please calculate the stock solution based on the stated concentration and/or density.

Reference

Graham KL, et al. Effects on rotavirus cell binding and infection of monomeric and polymeric peptides containing alpha2beta1 and alphaxbeta2 integrin ligand sequences. J Virol. 2004 Nov;78(21):11786-97.

Inhibitor · Natural Compounds · Compound Libraries · Recombinant Proteins

This product is for Research Use Only · Not for Human or Veterinary or Therapeutic Use

Tel:781-999-4286 E_mail:info@targetmol.com Address:34 Washington Street,Wellesley Hills,MA 02481