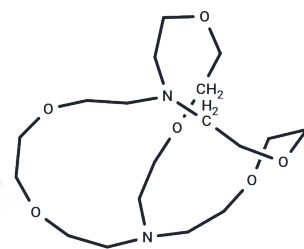


Cryptating agent 222

Chemical Properties

CAS No. :	23978-09-8
Formula:	C ₁₈ H ₃₆ N ₂ O ₆
Molecular Weight:	376.49
Storage:	Powder: -20°C for 3 years In solvent: -80°C for 1 year Actual storage temperature shall be subject to the COA.



Biological Description

Description	Cryptating agent 222 (NSC-264495) is a cryptand used with potassium mirror to reduce a hindered distannene to a crystalline radical anion and forms ligands with metal cations.
Targets(IC50)	Others

Solubility Information

Solubility	H ₂ O: 100 mg/mL (265.61 mM), Sonication is recommended. DMSO: 3.77 mg/mL (10.01 mM), Sonication is recommended. (< 1 mg/ml refers to the product slightly soluble or insoluble)
------------	---

Preparing Stock Solutions

	1mg	5mg	10mg
1 mM	2.6561 mL	13.2806 mL	26.5611 mL
5 mM	0.5312 mL	2.6561 mL	5.3122 mL
10 mM	0.2656 mL	1.3281 mL	2.6561 mL
50 mM	0.0531 mL	0.2656 mL	0.5312 mL

Please select the appropriate solvent to prepare the stock solution, according to the solubility of the product in different solvents. Please use it as soon as possible.

Note: The dilution table applies only to solid products. For liquid products, please calculate the stock solution based on the stated concentration and/or density.

Reference

- Prest JE, Fielden PR, Qi Y. Separation of alkali metals using isotachopheresis with cryptand 222 as a leading electrolyte additive. *J Chromatogr A*. 2012 Oct 19;1260:239-43.
- Castaing M, Morel F, Lehn JM. Transport of alkali cations through thin lipid membranes by (222)C10-cryptand, an ionizable mobile carrier. *J Membr Biol*. 1986;89(3):251-67.
- Baumann M, Schäffer E, Greim H. Short-term studies with the cryptating agent hexaoxa-diaza-bicyclo-hexacosane in rats. *Arch Toxicol Suppl*. 1984;7:427-9.
- Yu Q, et al. Structural study of a manganese(II) 'picket-fence' porphyrin complex. *Acta Crystallogr C Struct Chem*. 2015 Jul;71(Pt 7):545-8.

Inhibitor · Natural Compounds · Compound Libraries · Recombinant Proteins

This product is for Research Use Only · Not for Human or Veterinary or Therapeutic Use

Tel:781-999-4286 E_mail:info@targetmol.com Address:34 Washington Street,Wellesley Hills,MA 02481