

## Metipranolol hydrochloride

## Chemical Properties

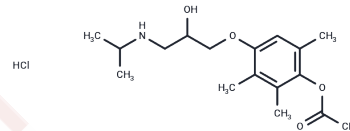
CAS No. : 36592-77-5

Formula: C<sub>17</sub>H<sub>28</sub>ClNO<sub>4</sub>

Molecular Weight: 345.86

Storage: Powder: -20°C for 3 years | In solvent: -80°C for 1 year

Actual storage temperature shall be subject to the COA.



## Biological Description

Description	Metipranolol hydrochloride is a non-selective $\beta$ -adrenergic receptor blocking agent.
Targets(IC50)	Others, Adrenergic Receptor
In vitro	Metipranolol is administered systemically to treat arterial hypertension and is applied topically for managing glaucoma.

## Solubility Information

Solubility	DMSO: 100 mg/mL (289.13 mM), Sonication is recommended. H <sub>2</sub> O: 100 mg/mL (289.13 mM), Sonication is recommended. ( $< 1$ mg/ml refers to the product slightly soluble or insoluble)
In vivo Formulation	10% DMSO+40% PEG300+5% Tween-80+45% Saline: 3.3 mg/mL (9.54 mM), Sonication is recommended. <i>Please add the solvents sequentially, clarifying the solution as much as possible before adding the next one. Dissolve by heating and/or sonication if necessary. Working solution is recommended to be prepared and used immediately. The formulation provided above is for reference purposes only. In vivo formulations may vary and should be modified based on specific experimental conditions.</i>

### Preparing Stock Solutions

---

	<b>1mg</b>	<b>5mg</b>	<b>10mg</b>
1 mM	2.8913 mL	14.4567 mL	28.9134 mL
5 mM	0.5783 mL	2.8913 mL	5.7827 mL
10 mM	0.2891 mL	1.4457 mL	2.8913 mL
50 mM	0.0578 mL	0.2891 mL	0.5783 mL

---

Please select the appropriate solvent to prepare the stock solution, according to the solubility of the product in different solvents. Please use it as soon as possible.

Note: The dilution table applies only to solid products. For liquid products, please calculate the stock solution based on the stated concentration and/or density.

### Reference

Wolf S, et al. Acute effect of metipranolol on the retinal circulation. Br J Ophthalmol. 1998 Aug;82(8):892-6.

**Inhibitor · Natural Compounds · Compound Libraries · Recombinant Proteins**

This product is for Research Use Only · Not for Human or Veterinary or Therapeutic Use

Tel:781-999-4286 E\_mail:info@targetmol.com Address:34 Washington Street,Wellesley Hills,MA 02481