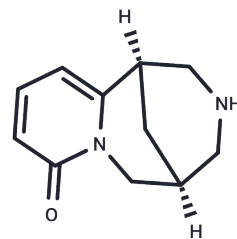


Cytisinicline

Chemical Properties

| | |
|-------------------|---|
| CAS No. : | 485-35-8 |
| Formula: | C ₁₁ H ₁₄ N ₂ O |
| Molecular Weight: | 190.24 |
| Storage: | Powder: -20°C for 3 years In solvent: -80°C for 1 year Actual storage temperature shall be subject to the COA. |



Biological Description

| | |
|---------------|---|
| Description | Cytisinicline (Sophorine), an alkaloid, is found naturally in several plants. |
| Targets(IC50) | AChR |

Solubility Information

| | |
|---------------------|---|
| Solubility | Ethanol: 36 mg/mL (189.23 mM),Sonication is recommended. H ₂ O: 125 mg/mL (657.06 mM),Sonication is recommended. DMSO: 84 mg/mL (441.55 mM),Sonication is recommended. (< 1 mg/ml refers to the product slightly soluble or insoluble) |
| In vivo Formulation | 10% DMSO+40% PEG300+5% Tween 80+45% Saline: 3.3 mg/mL (17.35 mM),Sonication is recommended. <i>Please add the solvents sequentially, clarifying the solution as much as possible before adding the next one. Dissolve by heating and/or sonication if necessary. Working solution is recommended to be prepared and used immediately. The formulation provided above is for reference purposes only. In vivo formulations may vary and should be modified based on specific experimental conditions.</i> |

Preparing Stock Solutions

| | 1mg | 5mg | 10mg |
|-------|-----------|------------|------------|
| 1 mM | 5.2565 mL | 26.2826 mL | 52.5652 mL |
| 5 mM | 1.0513 mL | 5.2565 mL | 10.513 mL |
| 10 mM | 0.5257 mL | 2.6283 mL | 5.2565 mL |
| 50 mM | 0.1051 mL | 0.5257 mL | 1.0513 mL |

Please select the appropriate solvent to prepare the stock solution, according to the solubility of the product in different solvents. Please use it as soon as possible.

Note: The dilution table applies only to solid products. For liquid products, please calculate the stock solution based on the stated concentration and/or density.

Reference

Walker N, et al. N Engl J Med. 2014 Dec 18;371(25):2353-62.

Huang S, Zhang Y, Zhang Y, et al. Establishment of LC-MS/MS method for determination of aloperine in rat plasma and its application in preclinical pharmacokinetics. Journal of Chromatography B. 2021, 1173: 122671.

Huang S, Zhang Y, Zhang Y, et al. Establishment of LC-MS/MS method for determination of aloperine in rat plasma and its application in preclinical pharmacokinetics[J]. Journal of Chromatography B. 2021, 1173: 122671.

Inhibitor · Natural Compounds · Compound Libraries · Recombinant Proteins

This product is for Research Use Only · Not for Human or Veterinary or Therapeutic Use

Tel:781-999-4286 E_mail:info@targetmol.com Address:34 Washington Street,Wellesley Hills,MA 02481