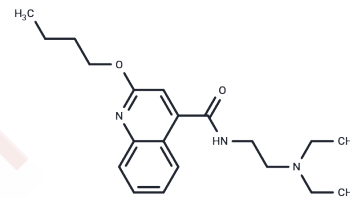


## Dibucaine

## Chemical Properties

CAS No. :	85-79-0
Formula:	C <sub>20</sub> H <sub>29</sub> N <sub>3</sub> O <sub>2</sub>
Molecular Weight:	343.46
Storage:	Keep away from moisture Powder: -20°C for 3 years   In solvent: -80°C for 1 year <small>Actual storage temperature shall be subject to the COA.</small>



## Biological Description

Description	Dibucaine (Cinchocaine), a local anesthetic of the amide type, is now usually used for surface anesthesia.
Targets(IC50)	CaMK,AChR,Sodium Channel

## Solubility Information

Solubility	DMSO: 55 mg/mL (160.14 mM),Sonication is recommended. (< 1 mg/ml refers to the product slightly soluble or insoluble)
In vivo Formulation	10% DMSO+40% PEG300+5% Tween 80+45% Saline: 2 mg/mL (5.82 mM),Sonication is recommended. <i>Please add the solvents sequentially, clarifying the solution as much as possible before adding the next one. Dissolve by heating and/or sonication if necessary. Working solution is recommended to be prepared and used immediately. The formulation provided above is for reference purposes only. In vivo formulations may vary and should be modified based on specific experimental conditions.</i>

## Preparing Stock Solutions

	1mg	5mg	10mg
1 mM	2.9115 mL	14.5577 mL	29.1155 mL
5 mM	0.5823 mL	2.9115 mL	5.8231 mL
10 mM	0.2912 mL	1.4558 mL	2.9115 mL
50 mM	0.0582 mL	0.2912 mL	0.5823 mL

Please select the appropriate solvent to prepare the stock solution, according to the solubility of the product in different solvents. Please use it as soon as possible.

Note: The dilution table applies only to solid products. For liquid products, please calculate the stock solution based on the stated concentration and/or density.

Reference

Oka M, et al. Eur J Pharmacol. 2002 Oct 4;452(2):175-81.

**Inhibitor · Natural Compounds · Compound Libraries · Recombinant Proteins**

This product is for Research Use Only· Not for Human or Veterinary or Therapeutic Use

Tel:781-999-4286 E\_mail:info@targetmol.com Address:34 Washington Street,Wellesley Hills,MA 02481