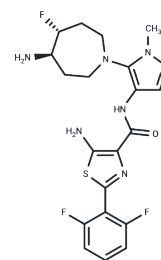


GDC-0339

Chemical Properties

CAS No. : 1428569-85-0
 Formula: C₂₀H₂₂F₃N₇O₅
 Molecular Weight: 465.5
 Storage: Powder: -20°C for 3 years | In solvent: -80°C for 1 year
 Actual storage temperature shall be subject to the COA.



Biological Description

Description	GDC-0339 is discovered as a potential treatment of multiple myeloma. GDC-0339 is an orally bioavailable and well-tolerated inhibitor of the pan-Pim kinase (Kis: 0.03 nM, 0.1 nM, and 0.02 nM for Pim1, Pim2, and Pim3, respectively).
Targets(IC50)	Pim
In vitro	GDC-0339 is cytostatic (IC ₅₀ of 0.1 μM for MM.1S cells). GDC-0339 treatment shows a constellation of Pim downstream signaling events. Which is consistent with inhibition of Pim kinases[2].
In vivo	GDC-0339 has a half-life of t _{1/2} =0.9 h. GDC-0339 (1-300 mg/kg; p.o; daily; for 21 days) is potently in RPMI8226 and MM.1S human multiple myeloma xenograft mouse models [2].

Solubility Information

Solubility	DMSO: 50 mg/mL (107.41 mM),Sonication is recommended. (< 1 mg/ml refers to the product slightly soluble or insoluble)
------------	--

Preparing Stock Solutions

	1mg	5mg	10mg
1 mM	2.1482 mL	10.7411 mL	21.4823 mL
5 mM	0.4296 mL	2.1482 mL	4.2965 mL
10 mM	0.2148 mL	1.0741 mL	2.1482 mL
50 mM	0.043 mL	0.2148 mL	0.4296 mL

Please select the appropriate solvent to prepare the stock solution, according to the solubility of the product in different solvents. Please use it as soon as possible.

Note: The dilution table applies only to solid products. For liquid products, please calculate the stock solution based on the stated concentration and/or density.

Reference

Takahashi RH, et al. CYP1A1-Mediated Intramolecular Rearrangement of Aminoazepane in GDC-0339. Drug Metab Dispos. 2017 Oct;45(10):1084-1092.

Wang X, et al. Optimization of Pan-Pim Kinase Activity and Oral Bioavailability Leading to Diaminopyrazole (GDC-0339) for the Treatment of Multiple Myeloma. J Med Chem. 2019 Feb 28;62(4):2140-2153.

Inhibitor · Natural Compounds · Compound Libraries · Recombinant Proteins

This product is for Research Use Only · Not for Human or Veterinary or Therapeutic Use

Tel:781-999-4286 E_mail:info@targetmol.com Address:34 Washington Street,Wellesley Hills,MA 02481