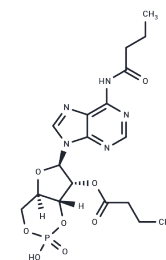


Bucladesine

Chemical Properties

CAS No. :	362-74-3
Formula:	C ₁₈ H ₂₄ N ₅ O ₈ P
Molecular Weight:	469.39
Storage:	Powder: -20°C for 3 years In solvent: -80°C for 1 year Actual storage temperature shall be subject to the COA.



Biological Description

Description	Bucladesine is a cyclic nucleotide derivative which mimics the action of endogenous cAMP and is capable of permeating the cell membrane. Bucladesine is a phosphodiesterase inhibitor. The compound is used in a wide variety of research applications because it mimics cAMP and can induce normal physiological responses when added to cells in experimental conditions.
Targets(IC50)	Others,PKA

Solubility Information

Solubility	DMSO: Soluble, (< 1 mg/ml refers to the product slightly soluble or insoluble)
------------	---

Preparing Stock Solutions

	1mg	5mg	10mg
1 mM	2.1304 mL	10.6521 mL	21.3042 mL
5 mM	0.4261 mL	2.1304 mL	4.2608 mL
10 mM	0.213 mL	1.0652 mL	2.1304 mL
50 mM	0.0426 mL	0.213 mL	0.4261 mL

Please select the appropriate solvent to prepare the stock solution, according to the solubility of the product in different solvents. Please use it as soon as possible.

Note: The dilution table applies only to solid products. For liquid products, please calculate the stock solution based on the stated concentration and/or density.

Reference

- Tabrizian K, Hashemzaei M, Nasiri AA, Najafi S, Amelinia F, Sanati M, Shamshirgaran F, Fanoudi S. Interactive involvement of hippocampal cAMP/PKA and cyclooxygenase-2 signaling pathways in spatial learning in the Morris water maze. *Folia Neuropathol.* 2018;56(1):58-66. doi: 10.5114/fn.2018.74660. PubMed PMID: 29663741.
- Aghsami M, Sharifzadeh M, Sepand MR, Yazdankhah M, Seyednejad SA, Pourahmad J. A cAMP analog attenuates beta-amyloid (1-42)-induced mitochondrial dysfunction and spatial learning and memory deficits. *Brain Res Bull.* 2018 Mar 29;140:34-42. doi: 10.1016/j.brainresbull.2018.03.016. [Epub ahead of print] PubMed PMID: 29605485.
- Rodrigues AL, Brescia M, Koschinski A, Moreira TH, Cameron RT, Baillie G, Beirão PSL, Zaccolo M, Cruz JS. Increase in Ca(2+) current by sustained cAMP levels enhances proliferation rate in GH3 cells. *Life Sci.* 2018 Jan 1;192:144-150. doi: 10.1016/j.lfs.2017.11.040. Epub 2017 Nov 26. PubMed PMID: 29183797.
- Tamura K, Ishikawa G, Yoshie M, Ohneda W, Nakai A, Takeshita T, Tachikawa E. Glibenclamide inhibits NLRP3 inflammasome-mediated IL-1 β secretion in human trophoblasts. *J Pharmacol Sci.* 2017 Oct;135(2):89-95. doi: 10.1016/j.jphs.2017.09.032. Epub 2017 Oct 6. PubMed PMID: 29056256.

Inhibitor · Natural Compounds · Compound Libraries · Recombinant Proteins

This product is for Research Use Only · Not for Human or Veterinary or Therapeutic Use

Tel:781-999-4286 E_mail:info@targetmol.com Address:34 Washington Street,Wellesley Hills,MA 02481