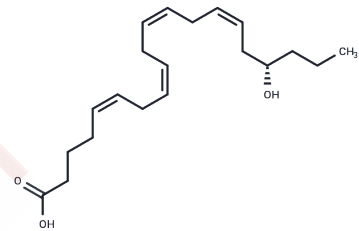


17(S)-HETE

Chemical Properties

CAS No. : 183509-25-3
 Formula: C₂₀H₃₂O₃
 Molecular Weight: 320.47
 Storage: Powder: -20°C for 3 years | In solvent: -80°C for 1 year
 Actual storage temperature shall be subject to the COA.



Biological Description

Description	17(S)-HETE is an arachidonic acid metabolite generated via the CYP450 pathway. 17(S)-HETE acts as an allosteric activator of CYP450 1B1 and an ATPase inhibitor, capable of inducing cardiac hypertrophy.
Targets(IC50)	ATPase, Endogenous Metabolite, Cytochromes P450
In vitro	17(S)-HETE (5-20 μM) can promote the activity and protein expression of CY1B1, ultimately accelerating the process of cardiac hypertrophy in Homo sapiens [1].
In vivo	After administering 17(S)-HETE (1-20 μg) via arterial injection to New Zealand white rabbits, the ATPase activity in their proximal renal tubules was significantly inhibited [2].

Solubility Information

Solubility	0.1 M Na ₂ CO ₃ : 1.00 mg/mL (3.12 mM), Sonication is recommended. PBS (pH 7.2): 0.40 mg/mL (1.25 mM), Sonication is recommended. Ethanol: Miscible DMSO: Miscible DMF: Miscible (< 1 mg/ml refers to the product slightly soluble or insoluble)
------------	---------------------------------------------------------------------------------------------------------------------------------------------------------------------------------------------------------------------------------------------------------------------------------------

Preparing Stock Solutions

	1mg	5mg	10mg
1 mM	3.1204 mL	15.6021 mL	31.2042 mL
5 mM	0.6241 mL	3.1204 mL	6.2408 mL
10 mM	0.312 mL	1.5602 mL	3.1204 mL
50 mM	0.0624 mL	0.312 mL	0.6241 mL

Please select the appropriate solvent to prepare the stock solution, according to the solubility of the product in different solvents. Please use it as soon as possible.

Note: The dilution table applies only to solid products. For liquid products, please calculate the stock solution based on the stated concentration and/or density.

Reference

Isse FA, et al., 17-(R/S)-hydroxyeicosatetraenoic acid (HETE) induces cardiac hypertrophy through the CYP1B1 in enantioselective manners. *Prostaglandins Other Lipid Mediat.* 2023 Oct;168:106749.

Carroll MA, et al., Cytochrome P-450-dependent HETEs: profile of biological activity and stimulation by vasoactive peptides. *Am J Physiol.* 1996 Oct;271(4 Pt 2):R863-9.

Inhibitor · Natural Compounds · Compound Libraries · Recombinant Proteins

This product is for Research Use Only · Not for Human or Veterinary or Therapeutic Use

Tel:781-999-4286 E_mail:info@targetmol.com Address:34 Washington Street,Wellesley Hills,MA 02481