

Elemicin

Chemical Properties

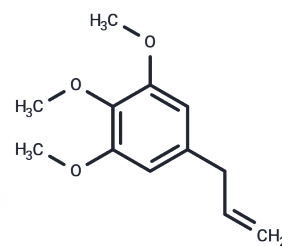
CAS No. : 487-11-6

Formula: C₁₂H₁₆O₃

Molecular Weight: 208.25

Storage: Pure form: -20°C for 3 years | In solvent: -80°C for 1 year

Actual storage temperature shall be subject to the COA.



Biological Description

Description	Elemicin (Elemicine) is a constituent of several plant species' essential oils with anticholinergic effects in human.
Targets(IC50)	5-HT Receptor, Antibacterial, Influenza Virus, Stearoyl-CoA Desaturase (SCD)

Solubility Information

Solubility	DMSO: 11 mg/mL (52.82 mM), Sonication is recommended. (< 1 mg/ml refers to the product slightly soluble or insoluble)
In vivo Formulation	10% DMSO+40% PEG300+5% Tween 80+45% Saline: 2 mg/mL (9.6 mM), Sonication is recommended. <i>Please add the solvents sequentially, clarifying the solution as much as possible before adding the next one. Dissolve by heating and/or sonication if necessary. Working solution is recommended to be prepared and used immediately. The formulation provided above is for reference purposes only. In vivo formulations may vary and should be modified based on specific experimental conditions.</i>

Preparing Stock Solutions

	1mg	5mg	10mg
1 mM	4.8019 mL	24.0096 mL	48.0192 mL
5 mM	0.9604 mL	4.8019 mL	9.6038 mL
10 mM	0.4802 mL	2.401 mL	4.8019 mL
50 mM	0.096 mL	0.4802 mL	0.9604 mL

Please select the appropriate solvent to prepare the stock solution, according to the solubility of the product in different solvents. Please use it as soon as possible.

Note: The dilution table applies only to solid products. For liquid products, please calculate the stock solution based on the stated concentration and/or density.

Reference

Maria Gracia N, et al. Philippine Pharmacists Association, 2014, 3(1)

Li X, Xiang C, Zhu S, et al. SNX8 enables lysosome reformation and reverses lysosomal storage disorder. Nature Communications. 2024, 15(1): 2553.

Inhibitor · Natural Compounds · Compound Libraries · Recombinant Proteins

This product is for Research Use Only · Not for Human or Veterinary or Therapeutic Use

Tel: 781-999-4286 E_mail: info@targetmol.com Address: 34 Washington Street, Wellesley Hills, MA 02481