

CEP-37440

## Chemical Properties

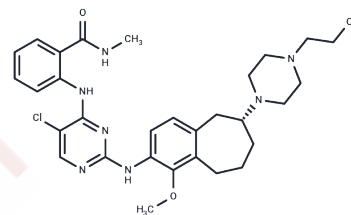
CAS No. : 1391712-60-9

Formula: C<sub>30</sub>H<sub>38</sub>ClN<sub>7</sub>O<sub>3</sub>

Molecular Weight: 580.12

Storage: Powder: -20°C for 3 years | In solvent: -80°C for 1 year

Actual storage temperature shall be subject to the COA.



## Biological Description

Description	CEP-37440 is an effective and specific Dual FAK/ALK inhibitor with IC <sub>50</sub> s of 120 nM (ALK cellular in 75% human plasma) and 2.3 nM (FAK).
Targets(IC <sub>50</sub> )	FAK,ALK
Kinase Assay	Kinase assay: Inhibitory potency of GSK2656157 is measured using recombinant GST-PERK (536-1116 amino acids) with 6-His-full-length human eIF2a as a substrate. Kinase selectivity is evaluated using 27 kinases at GSK as well as a panel of 300 kinases.

## Solubility Information

Solubility	DMSO: 150 mg/mL (258.57 mM), Sonication is recommended. (< 1 mg/ml refers to the product slightly soluble or insoluble)
In vivo Formulation	10% DMSO+40% PEG300+5% Tween 80+45% Saline: 1 mg/mL (1.72 mM), Sonication is recommended. <i>Please add the solvents sequentially, clarifying the solution as much as possible before adding the next one. Dissolve by heating and/or sonication if necessary. Working solution is recommended to be prepared and used immediately. The formulation provided above is for reference purposes only. In vivo formulations may vary and should be modified based on specific experimental conditions.</i>

### Preparing Stock Solutions

---

	<b>1mg</b>	<b>5mg</b>	<b>10mg</b>
1 mM	1.7238 mL	8.6189 mL	17.2378 mL
5 mM	0.3448 mL	1.7238 mL	3.4476 mL
10 mM	0.1724 mL	0.8619 mL	1.7238 mL
50 mM	0.0345 mL	0.1724 mL	0.3448 mL

---

Please select the appropriate solvent to prepare the stock solution, according to the solubility of the product in different solvents. Please use it as soon as possible.

Note: The dilution table applies only to solid products. For liquid products, please calculate the stock solution based on the stated concentration and/or density.

#### Reference

Iragavarapu C, et al. J Hematol Oncol. 2015 Feb 27;8(1):17.

**Inhibitor · Natural Compounds · Compound Libraries · Recombinant Proteins**

This product is for Research Use Only · Not for Human or Veterinary or Therapeutic Use

Tel:781-999-4286 E\_mail:info@targetmol.com Address:34 Washington Street,Wellesley Hills,MA 02481