

BI-1622

## Chemical Properties

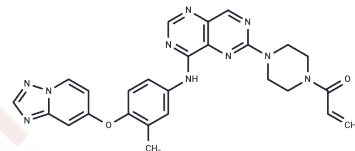
CAS No. : 2681392-19-6

Formula: C<sub>26</sub>H<sub>24</sub>N<sub>10</sub>O<sub>2</sub>

Molecular Weight: 508.53

Storage: Powder: -20°C for 3 years | In solvent: -80°C for 1 year

Actual storage temperature shall be subject to the COA.



## Biological Description

Description	BI-1622 is a highly selective, orally active HER2(ERBB2) inhibitor (IC <sub>50</sub> : 7 nM). BI-1622 is >25-fold selective for EGFR. In a mouse model of transplanted tumors transfected with H2170 and PC9 cells, BI-1622 exhibited high in vivo antitumor effects with good drug metabolism and pharmacokinetic properties.
Targets(IC <sub>50</sub> )	EGFR,Raf,Others,CDK,BTK,AK,PI4K,Tyrosine Kinases

## Preparing Stock Solutions

	1mg	5mg	10mg
1 mM	1.9665 mL	9.8323 mL	19.6645 mL
5 mM	0.3933 mL	1.9665 mL	3.9329 mL
10 mM	0.1966 mL	0.9832 mL	1.9665 mL
50 mM	0.0393 mL	0.1966 mL	0.3933 mL

Please select the appropriate solvent to prepare the stock solution, according to the solubility of the product in different solvents. Please use it as soon as possible.

Note: The dilution table applies only to solid products. For liquid products, please calculate the stock solution based on the stated concentration and/or density.

Inhibitor · Natural Compounds · Compound Libraries · Recombinant Proteins

This product is for Research Use Only · Not for Human or Veterinary or Therapeutic Use

Tel:781-999-4286

E\_mail:info@targetmol.com

Address:34 Washington Street,Wellesley Hills,MA 02481