

## Mc-Val-Cit-PAB-Cl

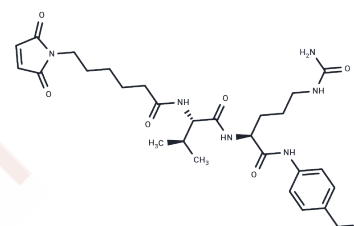
### Chemical Properties

CAS No. : 1639351-92-0

Formula: C<sub>28</sub>H<sub>39</sub>ClN<sub>6</sub>O<sub>6</sub>

Molecular Weight: 591.1

Storage: Keep away from direct sunlight  
 Powder: -20°C for 3 years | In solvent: -80°C for 1 year  
*Actual storage temperature shall be subject to the COA.*



### Biological Description

Description	Mc-Val-Cit-PAB-Cl, a cleavable ADC linker, is utilized in the conjugation of MMAE and antibodies to produce compounds such as antibody-MC-vc-MMAE (e.g., anti-CD22-MC-VC-PABC-MMAE), which demonstrate cytotoxicity with IC <sub>50</sub> s of 3.3 and 0.95 nM against BJAB and WSU cell lines, respectively.
Targets(IC <sub>50</sub> )	ADC Linker, PROTAC Linker

### Preparing Stock Solutions

	1mg	5mg	10mg
1 mM	1.6918 mL	8.4588 mL	16.9176 mL
5 mM	0.3384 mL	1.6918 mL	3.3835 mL
10 mM	0.1692 mL	0.8459 mL	1.6918 mL
50 mM	0.0338 mL	0.1692 mL	0.3384 mL

Please select the appropriate solvent to prepare the stock solution, according to the solubility of the product in different solvents. Please use it as soon as possible.

Note: The dilution table applies only to solid products. For liquid products, please calculate the stock solution based on the stated concentration and/or density.

### Reference

Staben LR, et al. Stabilizing a Tubulysin Antibody-Drug Conjugate To Enable Activity Against Multidrug-Resistant Tumors. ACS Med Chem Lett. 2017 Sep 5;8(10):1037-1041.

**Inhibitor · Natural Compounds · Compound Libraries · Recombinant Proteins**

This product is for Research Use Only · Not for Human or Veterinary or Therapeutic Use

Tel: 781-999-4286 E\_mail: info@targetmol.com Address: 34 Washington Street, Wellesley Hills, MA 02481