

Kyotorphin acetate

Chemical Properties

CAS No. :

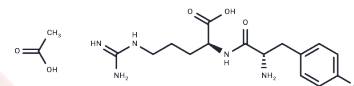
Formula: C17H27N5O6

Molecular Weight: 397.43

Keep away from moisture

Storage: Powder: -20°C for 3 years | In solvent: -80°C for 1 year

Actual storage temperature shall be subject to the COA.



Biological Description

Description	Kyotorphin acetate is an endogenous peptide with analgesia activity and can be used as a biomarker of Alzheimer disease.
Targets(IC50)	Endogenous Metabolite,Antibacterial
In vitro	The release of immunoreactive Met-enkephalin (I-ME) from the rat striatum was studied in vitro using a batch technique. A basal release of the order of 2-3% of total I-ME tissue content per 10 min was found. Kyotorphin produced dose-dependent I-ME release, with 0.5 mM maximal concentration causing 2-3-fold stimulation of release. This release was calcium-dependent. In concentrations up to 1 mM Kyotorphin did not change the basal release of [3H]noradrenaline, [3H]GABA, [3H]D-aspartate and immunoreactive beta-endorphin from various brain structures[3].
In vivo	Kyotorphin produced a naloxone-reversible potent analgesic effect, yet no inhibitory effect on electrically induced contractions of longitudinal muscle of the guinea pig ileum [1].

Solubility Information

Solubility	DMSO: 65 mg/mL (163.55 mM),Sonication is recommended. (< 1 mg/ml refers to the product slightly soluble or insoluble)
------------	--

Preparing Stock Solutions

	1mg	5mg	10mg
1 mM	2.5162 mL	12.5808 mL	25.1617 mL
5 mM	0.5032 mL	2.5162 mL	5.0323 mL
10 mM	0.2516 mL	1.2581 mL	2.5162 mL
50 mM	0.0503 mL	0.2516 mL	0.5032 mL

Please select the appropriate solvent to prepare the stock solution, according to the solubility of the product in different solvents. Please use it as soon as possible.

Note: The dilution table applies only to solid products. For liquid products, please calculate the stock solution based on the stated concentration and/or density.

Inhibitor · Natural Compounds · Compound Libraries · Recombinant Proteins

This product is for Research Use Only · Not for Human or Veterinary or Therapeutic Use

Tel:781-999-4286 E_mail:info@targetmol.com Address:34 Washington Street,Wellesley Hills,MA 02481