

Chloramphenicol succinate sodium

Chemical Properties

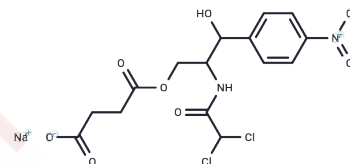
CAS No. : 982-57-0

Formula: C₁₅H₁₅Cl₂N₂NaO₈

Molecular Weight: 445.2

Storage: Powder: -20°C for 3 years | In solvent: -80°C for 1 year

Actual storage temperature shall be subject to the COA.



Biological Description

Description	Chloramphenicol succinate sodium is broad-spectrum antibiotic with antibacterial activity.
Targets(IC50)	Antibacterial,Antibiotic

Solubility Information

Solubility	H ₂ O: 100 mg/mL (224.62 mM),Sonication is recommended. DMSO: 250 mg/mL (561.55 mM),Sonication is recommended. (< 1 mg/ml refers to the product slightly soluble or insoluble)
In vivo Formulation	10% DMSO+40% PEG300+5% Tween 80+45% Saline: 3.3 mg/mL (7.41 mM),Sonication is recommended. 10% DMSO+90% Saline: 10 mg/mL (22.46 mM),Solution. <i>Please add the solvents sequentially, clarifying the solution as much as possible before adding the next one. Dissolve by heating and/or sonication if necessary. Working solution is recommended to be prepared and used immediately. The formulation provided above is for reference purposes only. In vivo formulations may vary and should be modified based on specific experimental conditions.</i>

Preparing Stock Solutions

	1mg	5mg	10mg
1 mM	2.2462 mL	11.2309 mL	22.4618 mL
5 mM	0.4492 mL	2.2462 mL	4.4924 mL
10 mM	0.2246 mL	1.1231 mL	2.2462 mL
50 mM	0.0449 mL	0.2246 mL	0.4492 mL

Please select the appropriate solvent to prepare the stock solution, according to the solubility of the product in different solvents. Please use it as soon as possible.

Note: The dilution table applies only to solid products. For liquid products, please calculate the stock solution based on the stated concentration and/or density.

Reference

Ambekar C S , Lee J S K , Cheung B M Y , et al. Chloramphenicol succinate, a competitive substrate and inhibitor of succinate dehydrogenase: possible reason for its toxicity[J]. Toxicology in Vitro, 2004, 18(4):0-447.

Ambrose D P J . Clinical Pharmacokinetics of Chloramphenicol and Chloramphenicol Succinate[J]. Clinical Pharmacokinetics, 1984, 9(3):222-238.

Inhibitor · Natural Compounds · Compound Libraries · Recombinant Proteins

This product is for Research Use Only· Not for Human or Veterinary or Therapeutic Use

Tel:781-999-4286 E_mail:info@targetmol.com Address:34 Washington Street,Wellesley Hills,MA 02481