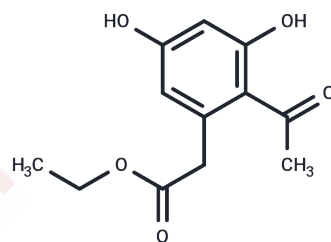


Curvulin

Chemical Properties

CAS No. :	19054-27-4
Formula:	C ₁₂ H ₁₄ O ₅
Molecular Weight:	238.24
Storage:	Powder: -20°C for 3 years In solvent: -80°C for 1 year Actual storage temperature shall be subject to the COA.



Biological Description

Description	Curvulin is the active metabolite isolated from <i>Paraphoma</i> sp. VIZR 1.46. Curvularin inhibits iNOS expression and microtubule assembly.
Targets(IC50)	Microtubule Associated

Solubility Information

Solubility	DMSO: 25 mg/mL (104.94 mM), Sonication is recommended. Methanol: Soluble Acetone: Soluble (< 1 mg/ml refers to the product slightly soluble or insoluble)
In vivo Formulation	10% DMSO+40% PEG300+5% Tween 80+45% Saline: 1 mg/mL (4.2 mM), Sonication is recommended. <i>Please add the solvents sequentially, clarifying the solution as much as possible before adding the next one. Dissolve by heating and/or sonication if necessary. Working solution is recommended to be prepared and used immediately. The formulation provided above is for reference purposes only. In vivo formulations may vary and should be modified based on specific experimental conditions.</i>

Preparing Stock Solutions

	1mg	5mg	10mg
1 mM	4.1974 mL	20.9872 mL	41.9745 mL
5 mM	0.8395 mL	4.1974 mL	8.3949 mL
10 mM	0.4197 mL	2.0987 mL	4.1974 mL
50 mM	0.0839 mL	0.4197 mL	0.8395 mL

Please select the appropriate solvent to prepare the stock solution, according to the solubility of the product in different solvents. Please use it as soon as possible.

Note: The dilution table applies only to solid products. For liquid products, please calculate the stock solution based on the stated concentration and/or density.

Reference

Ekaterina Poluektova, et al. Curvulin and Phaeosphaeride A From Paraphoma Sp. VIZR 1.46 Isolated From Cirsium arvense as Potential Herbicides. Molecules. 2018 Oct 28;23(11):2795.

Inhibitor · Natural Compounds · Compound Libraries · Recombinant Proteins

This product is for Research Use Only · Not for Human or Veterinary or Therapeutic Use

Tel:781-999-4286 E_mail:info@targetmol.com Address:34 Washington Street,Wellesley Hills,MA 02481