

## (+)-Hopeaphenol

## Chemical Properties

CAS No. : 388582-37-4

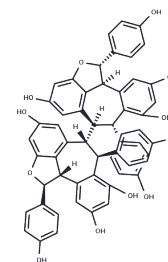
Formula: C56H42O12

Molecular Weight: 906.93

Storage: Store at low temperature, Keep away from direct sunlight

Powder: -20°C for 3 years | In solvent: -80°C for 1 year

Actual storage temperature shall be subject to the COA.



## Biological Description

Description	(+)-Hopeaphenol is isolated from <i>A. indica</i> (L.) and <i>V. indica</i> Linn with an IC50 value of 21.21 $\mu$ M in $\alpha$ -glucosidase inhibition assay.
Targets(IC50)	Others

## Preparing Stock Solutions

	1mg	5mg	10mg
1 mM	1.1026 mL	5.5131 mL	11.0262 mL
5 mM	0.2205 mL	1.1026 mL	2.2052 mL
10 mM	0.1103 mL	0.5513 mL	1.1026 mL
50 mM	0.0221 mL	0.1103 mL	0.2205 mL

Please select the appropriate solvent to prepare the stock solution, according to the solubility of the product in different solvents. Please use it as soon as possible.

Note: The dilution table applies only to solid products. For liquid products, please calculate the stock solution based on the stated concentration and/or density.

## Reference

Kang JE, Hwang S, Yoo N, Kim BS, Chung EH. A resveratrol oligomer, hopeaphenol suppresses virulence activity of *Pectobacterium atrosepticum* via the modulation of the master regulator, FlhDC. *Front Microbiol.* 2022 Oct 28;13: 999522.

**Inhibitor · Natural Compounds · Compound Libraries · Recombinant Proteins**

This product is for Research Use Only · Not for Human or Veterinary or Therapeutic Use

Tel: 781-999-4286

E\_mail: info@targetmol.com

Address: 34 Washington Street, Wellesley Hills, MA 02481