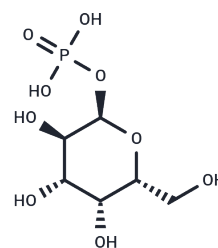


Galactose 1-phosphate

Chemical Properties

CAS No. :	2255-14-3
Formula:	C ₆ H ₁₃ O ₉ P
Molecular Weight:	260.14
Storage:	Powder: -20°C for 3 years In solvent: -80°C for 1 year Actual storage temperature shall be subject to the COA.



Biological Description

Description	Galactose 1-phosphate, an intermediate substance in both galactose metabolism and nucleotide sugar processes, plays a crucial role in the biochemical pathways involved.
Targets(IC50)	Others,Endogenous Metabolite

Preparing Stock Solutions

	1mg	5mg	10mg
1 mM	3.8441 mL	19.2204 mL	38.4408 mL
5 mM	0.7688 mL	3.8441 mL	7.6882 mL
10 mM	0.3844 mL	1.922 mL	3.8441 mL
50 mM	0.0769 mL	0.3844 mL	0.7688 mL

Please select the appropriate solvent to prepare the stock solution, according to the solubility of the product in different solvents. Please use it as soon as possible.

Note: The dilution table applies only to solid products. For liquid products, please calculate the stock solution based on the stated concentration and/or density.

Reference

metabolism pathways McCorvie TJ, et al. The structural and molecular biology of type I galactosemia: Enzymology of galactose 1-phosphate uridylyltransferase. IUBMB Life. 2011 Sep;63(9):694-700.

Inhibitor · Natural Compounds · Compound Libraries · Recombinant Proteins

This product is for Research Use Only · Not for Human or Veterinary or Therapeutic Use

Tel:781-999-4286 E_mail:info@targetmol.com Address:34 Washington Street,Wellesley Hills,MA 02481