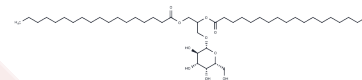


Monogalactosyl Diglyceride

Chemical Properties

CAS No. :	41670-62-6
Formula:	C45H86O10
Molecular Weight:	787.16
Storage:	Powder: -20°C for 3 years In solvent: -80°C for 1 year Actual storage temperature shall be subject to the COA.



Biological Description

Description	Monogalactosyl diglyceride is a minor galactolipid present in oligodendrocytes and myelin, as well as comprises a major fraction of the lipids in photosynthesizing plants and green microorganisms. [1][2] It is used as a marker for myelination and has also been shown to stimulate PKC α activity in oligodendrocytes. [2]
Targets(IC50)	Others,Antibacterial,Antifungal

Solubility Information

Solubility	Chloroform:Methanol (1:1): 10 mg/mL (12.7 mM),Sonication is recommended. (< 1 mg/ml refers to the product slightly soluble or insoluble)
------------	---

Preparing Stock Solutions

	1mg	5mg	10mg
1 mM	1.2704 mL	6.3519 mL	12.7039 mL
5 mM	0.2541 mL	1.2704 mL	2.5408 mL
10 mM	0.127 mL	0.6352 mL	1.2704 mL
50 mM	0.0254 mL	0.127 mL	0.2541 mL

Please select the appropriate solvent to prepare the stock solution, according to the solubility of the product in different solvents. Please use it as soon as possible.

Note: The dilution table applies only to solid products. For liquid products, please calculate the stock solution based on the stated concentration and/or density.

Reference

Schmidt-Schultz, T., and Althaus, H.H. Monogalactosyl diglyceride, a marker for myelination, activates oligodendroglial protein kinase C. *Journal of Neurochemistry* 62(4), 1578-1585 (1994).

Rosenberg, A., Gouaux, J., and Milch, P. Monogalactosyl and digalactosyl diglycerides from heterotrophic, hetero-autotrophic, and photobiotic *Euglena gracilis*. *Journal of Lipid Research* 7(6), 733-738 (1996).

Inhibitor · Natural Compounds · Compound Libraries · Recombinant Proteins

This product is for Research Use Only · Not for Human or Veterinary or Therapeutic Use

Tel:781-999-4286 E_mail:info@targetmol.com Address:34 Washington Street,Wellesley Hills,MA 02481