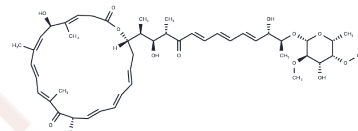


## Pulvomycin

## Chemical Properties

CAS No. :	11006-66-9
Formula:	C47H66O13
Molecular Weight:	839.032
Storage:	Powder: -20°C for 3 years   In solvent: -80°C for 1 year Actual storage temperature shall be subject to the COA.



## Biological Description

Description	Pulvomycin is a protein biosynthesis inhibitor preventing ternary complex formation between elongation factor Tu, GTP, and aminoacyl-tRNA.
Targets(IC50)	Others

## Preparing Stock Solutions

	1mg	5mg	10mg
1 mM	1.1919 mL	5.9593 mL	11.9185 mL
5 mM	0.2384 mL	1.1919 mL	2.3837 mL
10 mM	0.1192 mL	0.5959 mL	1.1919 mL
50 mM	0.0238 mL	0.1192 mL	0.2384 mL

Please select the appropriate solvent to prepare the stock solution, according to the solubility of the product in different solvents. Please use it as soon as possible.

Note: The dilution table applies only to solid products. For liquid products, please calculate the stock solution based on the stated concentration and/or density.

## Reference

- Börding S, Bach T. An enantioselective synthesis of the C24-C40 fragment of (-)-pulvomycin. *Chem Commun (Camb)*. 2014 May 18;50(38):4901-3. doi: 10.1039/c4cc01338g. PubMed PMID: 24691561.
- Martucci NM, Lamberti A, Arcari P, Masullo M. The eubacterial protein synthesis inhibitor pulvomycin interacts with archaeal elongation factor 1 $\alpha$  from *Sulfolobus solfataricus*. *Biochimie*. 2012 Feb;94(2):503-9. doi: 10.1016/j.biochi.2011.08.019. Epub 2011 Sep 10. PubMed PMID: 21924318.
- Cammarano P, Teichner A, Chinali G, Londei P, de Rosa M, Gambacorta A, Nicolaus B. Archaeobacterial elongation factor Tu insensitive to pulvomycin and kirromycin. *FEBS Lett*. 1982 Nov 8;148(2):255-9. PubMed PMID: 6759168.
- Landini P, Bandera M, Soffientini A, Goldstein BP. Sensitivity of elongation factor Tu (EF-Tu) from different bacterial species to the antibiotics efrotomycin, pulvomycin and MDL 62879. *J Gen Microbiol*. 1993 Apr;139(4):769-74. PubMed PMID: 8515234.

**Inhibitor · Natural Compounds · Compound Libraries · Recombinant Proteins**

This product is for Research Use Only · Not for Human or Veterinary or Therapeutic Use

Tel:781-999-4286 E\_mail:info@targetmol.com Address:34 Washington Street,Wellesley Hills,MA 02481