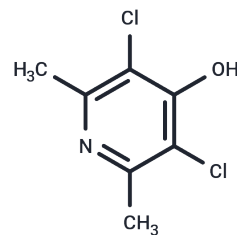


Clopidol

Chemical Properties

CAS No. :	2971-90-6
Formula:	C ₇ H ₇ Cl ₂ NO
Molecular Weight:	192.04
Storage:	Powder: -20°C for 3 years In solvent: -80°C for 1 year Actual storage temperature shall be subject to the COA.



Biological Description

Description	Clopidol (WR-61112) is a very effective anticoccidial agent used in poultry.
Targets(IC50)	Antibiotic,Parasite
In vivo	Clopidol inhibits electron transport within mitochondria isolated from immature oocysts that have not undergone sporulation.

Solubility Information

Solubility	DMSO: Slightly soluble, (< 1 mg/ml refers to the product slightly soluble or insoluble)
------------	---

Preparing Stock Solutions

	1mg	5mg	10mg
1 mM	5.2072 mL	26.0362 mL	52.0725 mL
5 mM	1.0414 mL	5.2072 mL	10.4145 mL
10 mM	0.5207 mL	2.6036 mL	5.2072 mL
50 mM	0.1041 mL	0.5207 mL	1.0414 mL

Please select the appropriate solvent to prepare the stock solution, according to the solubility of the product in different solvents. Please use it as soon as possible.

Note: The dilution table applies only to solid products. For liquid products, please calculate the stock solution based on the stated concentration and/or density.

Reference

- Fang B, et al. Anal Sci, 2009, 25(10), 1203-1206.
Fry M, et al. Biochem Pharmacol, 1984, 33(2), 229-240.

Inhibitor · Natural Compounds · Compound Libraries · Recombinant Proteins

This product is for Research Use Only · Not for Human or Veterinary or Therapeutic Use

Tel:781-999-4286 E_mail:info@targetmol.com Address:34 Washington Street,Wellesley Hills,MA 02481