

Bavachromene

Chemical Properties

CAS No. : 41743-38-8

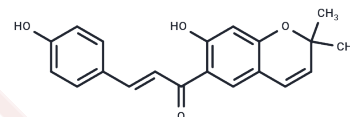
Formula: C₂₀H₁₈O₄

Molecular Weight: 322.35

Storage: Keep away from direct sunlight, Keep away from moisture

Powder: -20°C for 3 years | In solvent: -80°C for 1 year

Actual storage temperature shall be subject to the COA.



Biological Description

Description	Bavachromene, an isoprenylated chalcone extractable from Fructus in the family Psoraceae, has estrogenic and antimicrobial activities, and concentration-dependent inhibition of Lipopolysaccharide (LPS)-activated NO and PGE ₂ production in microglia.
Targets(IC50)	Estrogen Receptor/ERR, Antibacterial, NO Synthase, Prostaglandin Receptor

Preparing Stock Solutions

	1mg	5mg	10mg
1 mM	3.1022 mL	15.5111 mL	31.0222 mL
5 mM	0.6204 mL	3.1022 mL	6.2044 mL
10 mM	0.3102 mL	1.5511 mL	3.1022 mL
50 mM	0.062 mL	0.3102 mL	0.6204 mL

Please select the appropriate solvent to prepare the stock solution, according to the solubility of the product in different solvents. Please use it as soon as possible.

Note: The dilution table applies only to solid products. For liquid products, please calculate the stock solution based on the stated concentration and/or density.

Reference

Sun-Hye Lim, et al. Estrogenic Activities of Psoralea Corylifolia L. Seed Extracts and Main Constituents. *Phytomedicine*. 2011 Mar 15;18(5):425-30.

Inhibitor · Natural Compounds · Compound Libraries · Recombinant Proteins

This product is for Research Use Only · Not for Human or Veterinary or Therapeutic Use

Tel: 781-999-4286 E_mail: info@targetmol.com Address: 34 Washington Street, Wellesley Hills, MA 02481