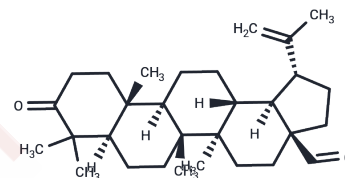


## Betulonaldehyde

## Chemical Properties

CAS No. :	4439-98-9
Formula:	C <sub>30</sub> H <sub>46</sub> O <sub>2</sub>
Molecular Weight:	438.68
Storage:	Powder: -20°C for 3 years   In solvent: -80°C for 1 year Actual storage temperature shall be subject to the COA.



## Biological Description

Description	Betulonaldehyde is a pentacyclic triterpenoid and derivative of the cholesterol biosynthesis inhibitor betulin that has been found in Betula. It is active against <i>P. falciparum</i> (IC <sub>50</sub> = 3.36 µg/ml) and cytotoxic to NCI H187 lung cancer cells and non-cancerous Vero cells (IC <sub>50</sub> s = 19.23 and 17.09 µg/ml, respectively). Topical application of betulonaldehyde (1 mg/ear) reduces ear edema induced by phorbol 12-myristate 13-acetate (TPA; Item No. 10008014) in mice. It has also been used a precursor in the semisynthesis of C-2 and C-28 betulonic aldehyde derivatives.
Targets(IC50)	Others,Parasite

## Preparing Stock Solutions

	1mg	5mg	10mg
1 mM	2.2796 mL	11.3978 mL	22.7957 mL
5 mM	0.4559 mL	2.2796 mL	4.5591 mL
10 mM	0.228 mL	1.1398 mL	2.2796 mL
50 mM	0.0456 mL	0.228 mL	0.4559 mL

Please select the appropriate solvent to prepare the stock solution, according to the solubility of the product in different solvents. Please use it as soon as possible.

Note: The dilution table applies only to solid products. For liquid products, please calculate the stock solution based on the stated concentration and/or density.

Inhibitor · Natural Compounds · Compound Libraries · Recombinant Proteins

This product is for Research Use Only · Not for Human or Veterinary or Therapeutic Use

Tel:781-999-4286 E\_mail:info@targetmol.com Address:34 Washington Street,Wellesley Hills,MA 02481