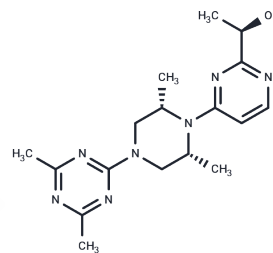


CP-642931

Chemical Properties

CAS No. : 300551-49-9
 Formula: C₁₇H₂₅N₇O
 Molecular Weight: 343.43
 Storage: Powder: -20°C for 3 years | In solvent: -80°C for 1 year
 Actual storage temperature shall be subject to the COA.



Biological Description

Description	CP-642931 (Sorbitol dehydrogenase-IN-1) is an orally active and highly potent sorbitol dehydrogenase inhibitor for the study of diabetes and cardiovascular disease.
Targets(IC50)	Others,Dehydrogenase

Preparing Stock Solutions

	1mg	5mg	10mg
1 mM	2.9118 mL	14.559 mL	29.118 mL
5 mM	0.5824 mL	2.9118 mL	5.8236 mL
10 mM	0.2912 mL	1.4559 mL	2.9118 mL
50 mM	0.0582 mL	0.2912 mL	0.5824 mL

Please select the appropriate solvent to prepare the stock solution, according to the solubility of the product in different solvents. Please use it as soon as possible.

Note: The dilution table applies only to solid products. For liquid products, please calculate the stock solution based on the stated concentration and/or density.

Reference

Mylari BL, et al. A sorbitol dehydrogenase inhibitor of exceptional in vivo potency with a long duration of action: 1-(R)-[4-[4-(4,6-dimethyl[1,3,5]triazin-2-yl)-2R,6S-dimethylpiperazin-1-yl]pyrimidin-2-yl]ethanol. J Med Chem. 2002 Sep 26;45(20):4398-401.

Inhibitor · Natural Compounds · Compound Libraries · Recombinant Proteins

This product is for Research Use Only · Not for Human or Veterinary or Therapeutic Use

Tel:781-999-4286 E_mail:info@targetmol.com Address:34 Washington Street,Wellesley Hills,MA 02481