

C-Reactive Protein (CRP) (77-82)

Chemical Properties

CAS No. : 130349-01-8

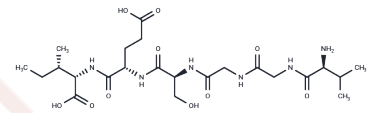
Formula: C₂₃H₄₀N₆O₁₀

Molecular Weight: 560.61

Keep away from moisture

Storage: Powder: -20°C for 3 years | In solvent: -80°C for 1 year

Actual storage temperature shall be subject to the COA.



Biological Description

Description	C-Reactive Protein (CRP) 77-82 is the 77-82 fragment of C-Reactive Protein. CRP, the prototypic marker of inflammation, is a cardiovascular risk marker and may promote atherogenesis. CRP is an annular (ring-shaped), pentameric protein found in blood plasma, whose circulating concentrations rise in response to inflammation. It is an acute-phase protein of hepatic origin that increases following interleukin-6 secretion by macrophages and T cells.
-------------	--

Solubility Information

Solubility	H ₂ O: Soluble, (< 1 mg/ml refers to the product slightly soluble or insoluble)
------------	--

Preparing Stock Solutions

	1mg	5mg	10mg
1 mM	1.7838 mL	8.9189 mL	17.8377 mL
5 mM	0.3568 mL	1.7838 mL	3.5675 mL
10 mM	0.1784 mL	0.8919 mL	1.7838 mL
50 mM	0.0357 mL	0.1784 mL	0.3568 mL

Please select the appropriate solvent to prepare the stock solution, according to the solubility of the product in different solvents. Please use it as soon as possible.

Note: The dilution table applies only to solid products. For liquid products, please calculate the stock solution based on the stated concentration and/or density.

Reference

Devaraj S, et al. C-reactive protein stimulates superoxide anion release and tissue factor activity in vivo. *Atherosclerosis*. 2009 Mar;203(1):67-74.

Inhibitor · Natural Compounds · Compound Libraries · Recombinant Proteins

This product is for Research Use Only · Not for Human or Veterinary or Therapeutic Use

Tel:781-999-4286 E_mail:info@targetmol.com Address:34 Washington Street,Wellesley Hills,MA 02481