

Pomalidomide-peg1-co2H

Chemical Properties

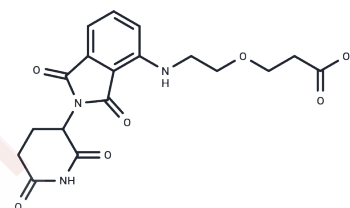
CAS No. : 2139348-60-8

Formula: C₁₈H₁₉N₃O₇

Molecular Weight: 389.36

Storage: Powder: -20°C for 3 years | In solvent: -80°C for 1 year

Actual storage temperature shall be subject to the COA.



Biological Description

Description	Pomalidomide-peg1-co2H is a synthetic E3 ligase ligand-linker conjugate containing a Pomalidomide-based cereblon ligand and a 2-unit PEG linker.
Targets(IC50)	E3 Ligase Ligand-Linker Conjugates
In vitro	PROTACs contain two distinct ligands, one for the E3 ubiquitin ligase and the other for the target protein, linked by a linker[1].

Solubility Information

Solubility	DMSO: 100 mg/mL (256.83 mM),Sonication is recommended. (< 1 mg/ml refers to the product slightly soluble or insoluble)
In vivo Formulation	10% DMSO+40% PEG300+5% Tween 80+45% Saline: 4 mg/mL (10.27 mM),Sonication is recommended. <i>Please add the solvents sequentially, clarifying the solution as much as possible before adding the next one. Dissolve by heating and/or sonication if necessary. Working solution is recommended to be prepared and used immediately. The formulation provided above is for reference purposes only. In vivo formulations may vary and should be modified based on specific experimental conditions.</i>

Preparing Stock Solutions

	1mg	5mg	10mg
1 mM	2.5683 mL	12.8416 mL	25.6832 mL
5 mM	0.5137 mL	2.5683 mL	5.1366 mL
10 mM	0.2568 mL	1.2842 mL	2.5683 mL
50 mM	0.0514 mL	0.2568 mL	0.5137 mL

Please select the appropriate solvent to prepare the stock solution, according to the solubility of the product in different solvents. Please use it as soon as possible.

Note: The dilution table applies only to solid products. For liquid products, please calculate the stock solution based on the stated concentration and/or density.

Reference

Qiu X, et al. Jiang B. Chemoselective Synthesis of Lenalidomide-Based PROTAC Library Using Alkylation Reaction. Org Lett. 2019;21(10):3838-3841.

Inhibitor · Natural Compounds · Compound Libraries · Recombinant Proteins

This product is for Research Use Only · Not for Human or Veterinary or Therapeutic Use

Tel:781-999-4286 E_mail:info@targetmol.com Address:34 Washington Street,Wellesley Hills,MA 02481