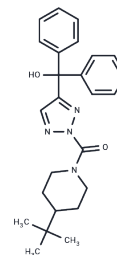


ML-211

Chemical Properties

CAS No. : 2205032-89-7
 Formula: C₂₅H₃₀N₄O₂
 Molecular Weight: 418.53
 Storage: Powder: -20°C for 3 years | In solvent: -80°C for 1 year
Actual storage temperature shall be subject to the COA.



Biological Description

Description	ML-211 is a carbamate-based dual inhibitor of LYPLA1 (IC ₅₀ = 17 nM) and LYPLA2 (IC ₅₀ = 30 nM).
Targets(IC ₅₀)	Others, MAGL, Phospholipase

Solubility Information

Solubility	DMSO: 4.19 mg/mL (10.01 mM), Sonication is recommended. (< 1 mg/ml refers to the product slightly soluble or insoluble)
In vivo Formulation	10% DMSO+40% PEG300+5% Tween 80+45% Saline: 1 mg/mL (2.39 mM), Sonication is recommended. <i>Please add the solvents sequentially, clarifying the solution as much as possible before adding the next one. Dissolve by heating and/or sonication if necessary. Working solution is recommended to be prepared and used immediately. The formulation provided above is for reference purposes only. In vivo formulations may vary and should be modified based on specific experimental conditions.</i>

Preparing Stock Solutions

	1mg	5mg	10mg
1 mM	2.3893 mL	11.9466 mL	23.8931 mL
5 mM	0.4779 mL	2.3893 mL	4.7786 mL
10 mM	0.2389 mL	1.1947 mL	2.3893 mL
50 mM	0.0478 mL	0.2389 mL	0.4779 mL

Please select the appropriate solvent to prepare the stock solution, according to the solubility of the product in different solvents. Please use it as soon as possible.

Note: The dilution table applies only to solid products. For liquid products, please calculate the stock solution based on the stated concentration and/or density.

Reference

Adibekian A , Martin B R , Chang J W , et al. Characterization of a Selective, Reversible Inhibitor of Lysophospholipase 2 (LYPLA2)[J]. National Center for Biotechnology Information (US), 2010.

Adibekian A , Hsu K L , Speers A E , et al. Optimization and characterization of a triazole urea inhibitor for alpha/beta hydrolase domain-containing protein 11 (ABHD11): anti-probe for LYPLA1/LYPLA2 dual inhibitor ML211[M]. PubMed, 2010.

Inhibitor · Natural Compounds · Compound Libraries · Recombinant Proteins

This product is for Research Use Only· Not for Human or Veterinary or Therapeutic Use

Tel:781-999-4286 E_mail:info@targetmol.com Address:34 Washington Street,Wellesley Hills,MA 02481