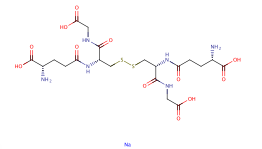


## L-Glutathione, oxidized (sodium salt)

### Chemical Properties

CAS No. :	103239-24-3
Formula:	C <sub>20</sub> H <sub>30</sub> N <sub>6</sub> Na <sub>2</sub> O <sub>12</sub> S <sub>2</sub>
Molecular Weight:	656.6
Storage:	Keep away from moisture Powder: -20°C for 3 years   In solvent: -80°C for 1 year <small>Actual storage temperature shall be subject to the COA.</small>



### Biological Description

Description	Glutathione can occur in reduced (GSH), oxidized (GSSG), or in mixed disulfide forms and is ubiquitous in multiple biological systems serving as the major thiol-disulfide redox buffer of the cell. GSSG is the oxidized form of GSH . It can be reduced back to GSH through the NADPH-dependent enzyme glutathione reductase. GSSG functions as a hydrogen acceptor in the enzymatic determination of NADP+ and NADPH and can be a proximal donor in S-glutathionylation post translational modifications. The ratio of reduced glutathione to oxidized glutathione within cells is often used as an indicator of oxidative stress, with higher concentrations of GSSG predicting increased oxidative stress.
Targets(IC50)	Reactive Oxygen Species,Endogenous Metabolite,ROS

### Solubility Information

Solubility	PBS (pH 7.2): 10 mg/mL (15.23 mM),Sonication is recommended. (< 1 mg/ml refers to the product slightly soluble or insoluble)
------------	---

### Preparing Stock Solutions

	1mg	5mg	10mg
1 mM	1.523 mL	7.615 mL	15.230 mL
5 mM	0.3046 mL	1.523 mL	3.046 mL
10 mM	0.1523 mL	0.7615 mL	1.523 mL
50 mM	0.0305 mL	0.1523 mL	0.3046 mL

Please select the appropriate solvent to prepare the stock solution, according to the solubility of the product in different solvents. Please use it as soon as possible.

Note: The dilution table applies only to solid products. For liquid products, please calculate the stock solution based on the stated concentration and/or density.

**Inhibitor · Natural Compounds · Compound Libraries · Recombinant Proteins**

This product is for Research Use Only · Not for Human or Veterinary or Therapeutic Use

Tel:781-999-4286 E\_mail:info@targetmol.com Address:34 Washington Street,Wellesley Hills,MA 02481