

Maltopentaose

Chemical Properties

CAS No. : 34620-76-3

Formula: C₃₀H₅₂O₂₆

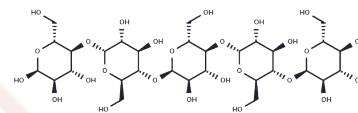
Molecular Weight: 828.72

Keep away from direct sunlight, Keep away from moisture

Storage:

Powder: -20°C for 3 years | In solvent: -80°C for 1 year

Actual storage temperature shall be subject to the COA.



Biological Description

Description	Maltopentaose (Maltopentose) is a maltooligosaccharide that is used for research and diagnostic purposes. They can also be used in nutrients and healthcare.
Targets(IC50)	Endogenous Metabolite, Amylase

Solubility Information

Solubility	DMSO: 50 mg/mL (60.33 mM), Sonication is recommended. (< 1 mg/ml refers to the product slightly soluble or insoluble)
------------	--

Preparing Stock Solutions

	1mg	5mg	10mg
1 mM	1.2067 mL	6.0334 mL	12.0668 mL
5 mM	0.2413 mL	1.2067 mL	2.4134 mL
10 mM	0.1207 mL	0.6033 mL	1.2067 mL
50 mM	0.0241 mL	0.1207 mL	0.2413 mL

Please select the appropriate solvent to prepare the stock solution, according to the solubility of the product in different solvents. Please use it as soon as possible.

Note: The dilution table applies only to solid products. For liquid products, please calculate the stock solution based on the stated concentration and/or density.

Reference

Maltopentaose is the shortest chain oligosaccharide that can be classified as maltodextrin and is also used in a study to investigate glycation and phosphorylation of α -lactalbumin.

Inhibitor · Natural Compounds · Compound Libraries · Recombinant Proteins

This product is for Research Use Only · Not for Human or Veterinary or Therapeutic Use

Tel:781-999-4286 E_mail:info@targetmol.com Address:34 Washington Street,Wellesley Hills,MA 02481