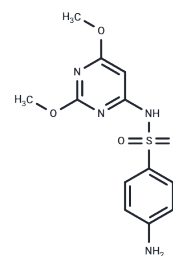


## Sulfadimethoxine

## Chemical Properties

CAS No. :	122-11-2
Formula:	C <sub>12</sub> H <sub>14</sub> N <sub>4</sub> O <sub>4</sub> S
Molecular Weight:	310.33
Storage:	Powder: -20°C for 3 years   In solvent: -80°C for 1 year Actual storage temperature shall be subject to the COA.



## Biological Description

Description	Sulfadimethoxine (Sulphadimethoxine) is a sulfanilamide that is used as an anti-infective agent.
Targets(IC50)	Antibacterial, Antibiotic

## Solubility Information

Solubility	H <sub>2</sub> O: < 1 mg/mL (insoluble or slightly soluble), Ethanol: < 1 mg/mL (insoluble or slightly soluble), DMSO: 55 mg/mL (177.23 mM), Sonication is recommended. (< 1 mg/ml refers to the product slightly soluble or insoluble)
In vivo Formulation	10% DMSO+40% PEG300+5% Tween 80+45% Saline: 2 mg/mL (6.44 mM), Sonication is recommended. <i>Please add the solvents sequentially, clarifying the solution as much as possible before adding the next one. Dissolve by heating and/or sonication if necessary. Working solution is recommended to be prepared and used immediately. The formulation provided above is for reference purposes only. In vivo formulations may vary and should be modified based on specific experimental conditions.</i>

## Preparing Stock Solutions

	1mg	5mg	10mg
1 mM	3.2224 mL	16.1119 mL	32.2238 mL
5 mM	0.6445 mL	3.2224 mL	6.4448 mL
10 mM	0.3222 mL	1.6112 mL	3.2224 mL
50 mM	0.0644 mL	0.3222 mL	0.6445 mL

Please select the appropriate solvent to prepare the stock solution, according to the solubility of the product in different solvents. Please use it as soon as possible.

Note: The dilution table applies only to solid products. For liquid products, please calculate the stock solution based on the stated concentration and/or density.

Reference

Song KM, et al. Biosens Bioelectron. 2012 Mar 15;33(1):113-9.

**Inhibitor · Natural Compounds · Compound Libraries · Recombinant Proteins**

This product is for Research Use Only · Not for Human or Veterinary or Therapeutic Use

Tel:781-999-4286 E\_mail:info@targetmol.com Address:34 Washington Street,Wellesley Hills,MA 02481