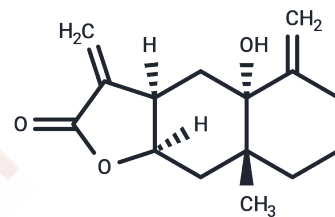


## Telekin

## Chemical Properties

CAS No. :	6752-90-5
Formula:	C <sub>15</sub> H <sub>20</sub> O <sub>3</sub>
Molecular Weight:	248.32
Storage:	Keep away from direct sunlight, Keep away from moisture Powder: -20°C for 3 years   In solvent: -80°C for 1 year <small>Actual storage temperature shall be subject to the COA.</small>



## Biological Description

Description	Telekin, a eudesmane-type sesquiterpene lactone compound isolated from Chinese folk medicine <i>Carpesium divaricatum</i> , has been reported to strongly inhibit the proliferation of cancer cells
Targets(IC50)	Apoptosis,Others
In vitro	telekin activates the mitochondria-mediated apoptotic pathway in hepatocellular carcinoma cells and may merit further investigation as a potential therapeutic agent for the treatment of hepatocellular carcinoma[1].

## Solubility Information

Solubility	DMSO: 27.5 mg/mL (110.74 mM), Sonication is recommended. ( < 1 mg/ml refers to the product slightly soluble or insoluble)
------------	--

## Preparing Stock Solutions

	1mg	5mg	10mg
1 mM	4.0271 mL	20.1353 mL	40.2706 mL
5 mM	0.8054 mL	4.0271 mL	8.0541 mL
10 mM	0.4027 mL	2.0135 mL	4.0271 mL
50 mM	0.0805 mL	0.4027 mL	0.8054 mL

Please select the appropriate solvent to prepare the stock solution, according to the solubility of the product in different solvents. Please use it as soon as possible.

Note: The dilution table applies only to solid products. For liquid products, please calculate the stock solution based on the stated concentration and/or density.

### Reference

Zheng B , Wu L , Ma L , et al. Telekin induces apoptosis associated with the mitochondria-mediated pathway in human hepatocellular carcinoma cells[J]. Biological & Pharmaceutical Bulletin, 2013, 36(7):1118.

Li L , Zheng B B , Ma L S , et al. Telekin suppresses human hepatocellular carcinoma cells in vitro by inducing G2/M phase arrest via the p38 MAPK signaling pathway[J]. Acta Pharmacologica Sinica, 2014, 35(10):1311-1322.

**Inhibitor · Natural Compounds · Compound Libraries · Recombinant Proteins**

This product is for Research Use Only · Not for Human or Veterinary or Therapeutic Use

Tel:781-999-4286 E\_mail:info@targetmol.com Address:34 Washington Street,Wellesley Hills,MA 02481