

Oleyl Anilide

Chemical Properties

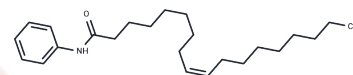
CAS No. : 5429-85-6

Formula: C₂₄H₃₉NO

Molecular Weight: 357.57

Storage: Powder: -20°C for 3 years | In solvent: -80°C for 1 year

Actual storage temperature shall be subject to the COA.



Biological Description

Description	AcylCoA:cholesterol acyltransferase (ACAT) is an intracellular cholesteryl ester synthase tied closely to the absorption of dietary cholesterol. Oleyl anilide (OA) is a weak inhibitor of acylCoA:cholesterol acyltransferase (ACAT) with an IC ₅₀ of 26 μM. OA and the related glyceride dioleoyl phenylamino propane 1,2-diol have been linked to a syndrome of eosinophilia, excessive T-cell activation, and elevated interleukin-4 (IL-4), soluble IL-2R, and IL-5. The clinical consequences are an acute pulmonary inflammatory reaction followed by chronic neuropathy, myalgia, and autoimmune connective tissue disease, generally referred to as toxic oil syndrome (TOS). Aniline-denatured cooking oil is a source of OA associated with TOS.
Targets(IC ₅₀)	Others,Acyltransferase

Solubility Information

Solubility	Ethanol: 30 mg/mL (83.9 mM),Sonication is recommended. DMSO: 30 mg/mL (83.9 mM),Sonication is recommended. DMF: 30 mg/mL (83.9 mM),Sonication is recommended. (< 1 mg/ml refers to the product slightly soluble or insoluble)
------------	--

Preparing Stock Solutions

	1mg	5mg	10mg
1 mM	2.7967 mL	13.9833 mL	27.9666 mL
5 mM	0.5593 mL	2.7967 mL	5.5933 mL
10 mM	0.2797 mL	1.3983 mL	2.7967 mL
50 mM	0.0559 mL	0.2797 mL	0.5593 mL

Please select the appropriate solvent to prepare the stock solution, according to the solubility of the product in different solvents. Please use it as soon as possible.

Note: The dilution table applies only to solid products. For liquid products, please calculate the stock solution based on the stated concentration and/or density.

Inhibitor · Natural Compounds · Compound Libraries · Recombinant Proteins

This product is for Research Use Only · Not for Human or Veterinary or Therapeutic Use

Tel:781-999-4286 E_mail:info@targetmol.com Address:34 Washington Street,Wellesley Hills,MA 02481