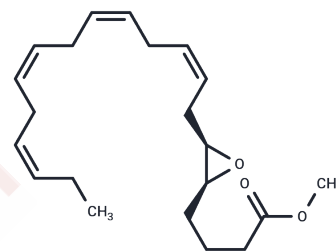


**(±)5(6)-EpETE methyl ester****Chemical Properties**

CAS No. :	127716-49-8
Formula:	C <sub>21</sub> H <sub>32</sub> O <sub>3</sub>
Molecular Weight:	332.48
Storage:	Store at low temperature Powder: -20°C for 3 years   In solvent: -80°C for 1 year <small>Actual storage temperature shall be subject to the COA.</small>

**Biological Description**

Description	(±)5(6)-EpETE methyl ester ((±)5,6-EEQ methyl ester) is biosynthesized from cytochrome P450.1.2 in rat and rabbit liver microsomes and is involved in Ca <sup>2+</sup> mobilization and hormone secretion in neuroendocrine cells.
Targets(IC50)	Others

**Solubility Information**

Solubility	Ethanol: 5 mg/mL (15.04 mM),Sonication is recommended. DMSO: 5 mg/mL (15.04 mM),Sonication is recommended. DMF: 5 mg/mL (15.04 mM),Sonication is recommended. Ethanol:PBS (pH 7.2)(1:1): < 1 mg/mL (insoluble) (< 1 mg/ml refers to the product slightly soluble or insoluble)
------------	--

## Preparing Stock Solutions

	1mg	5mg	10mg
1 mM	3.0077 mL	15.0385 mL	30.077 mL
5 mM	0.6015 mL	3.0077 mL	6.0154 mL
10 mM	0.3008 mL	1.5038 mL	3.0077 mL
50 mM	0.0602 mL	0.3008 mL	0.6015 mL

Please select the appropriate solvent to prepare the stock solution, according to the solubility of the product in different solvents. Please use it as soon as possible.

Note: The dilution table applies only to solid products. For liquid products, please calculate the stock solution based on the stated concentration and/or density.

Reference

Knapp HR, et al. Urinary excretion of diols derived from eicosapentaenoic acid during n-3 fatty acid ingestion by man. Prostaglandins. 1991 Jul;42(1):47-54.

**Inhibitor · Natural Compounds · Compound Libraries · Recombinant Proteins**

This product is for Research Use Only· Not for Human or Veterinary or Therapeutic Use

Tel:781-999-4286 E\_mail:info@targetmol.com Address:34 Washington Street,Wellesley Hills,MA 02481