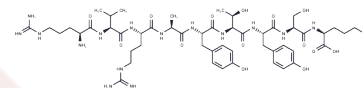


## CEF27, Epstein-Barr Virus BRLF-1 lytic (148-156)

## Chemical Properties

|                   |   |
|-------------------|---|
| CAS No. :         | 254110-79-7   |
| Formula:          | TKSVY2  |
| Molecular Weight: | 302.93  |
| Storage:          | Keep away from moisture<br>Powder: -20°C for 3 years   In solvent: -80°C for 1 year<br><small>Actual storage temperature shall be subject to the COA.</small> |



## Biological Description

|               |   |
|---------------|---|
| Description   | HLA-A*0301-restricted epitope from Epstein-Barr Virus , EBV BRLF-1 (148-156). |
| Targets(IC50) | Antifection   |

## Solubility Information

|            |  |
|------------|--|
| Solubility | H2O: Soluble,<br>(< 1 mg/ml refers to the product slightly soluble or insoluble) |
|------------|--|

## Preparing Stock Solutions

|       | 1mg       | 5mg        | 10mg       |
|-------|-----------|------------|------------|
| 1 mM  | 3.3011 mL | 16.5055 mL | 33.0109 mL |
| 5 mM  | 0.6602 mL | 3.3011 mL  | 6.6022 mL  |
| 10 mM | 0.3301 mL | 1.6505 mL  | 3.3011 mL  |
| 50 mM | 0.066 mL  | 0.3301 mL  | 0.6602 mL  |

Please select the appropriate solvent to prepare the stock solution, according to the solubility of the product in different solvents. Please use it as soon as possible.

Note: The dilution table applies only to solid products. For liquid products, please calculate the stock solution based on the stated concentration and/or density.

## Reference

Darr CD, et al. Epstein-Barr virus immediate-early protein BRLF1 induces the lytic form of viral replication through a mechanism involving phosphatidylinositol-3 kinase activation. J Virol. 2001 Jul;75(13):6135-42.

**Inhibitor · Natural Compounds · Compound Libraries · Recombinant Proteins**

This product is for Research Use Only · Not for Human or Veterinary or Therapeutic Use

Tel:781-999-4286 E\_mail:info@targetmol.com Address:34 Washington Street,Wellesley Hills,MA 02481