

## Cytochrome P450 CYP1B1 (190-198) [Homo sapiens]

## Chemical Properties

CAS No. :

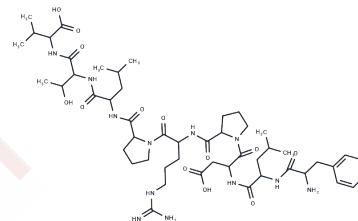
Formula: C50H80N12O13

Molecular Weight: 1057.24

Keep away from moisture

Storage: Powder: -20°C for 3 years | In solvent: -80°C for 1 year

Actual storage temperature shall be subject to the COA.



## Biological Description

Description	Cytochrome P450 CYP1B1 (190-198) [Homo sapiens] is a peptide from Cytochrome c, which is a small heme protein found loosely associated with the inner membrane of the mitochondrion. Cytochromes c from certain eukaryotes, including plants and fungi but not higher animals, contains methylated lysine residues at specific positions <sup>1</sup> . Cytochrome c is a required cofactor for Apaf-1 function <sup>2</sup> .
Targets(IC50)	Others

## Solubility Information

Solubility	DMSO: ≥105.7 mg/mL, Sonication is recommended. (< 1 mg/ml refers to the product slightly soluble or insoluble)
------------	---

## Preparing Stock Solutions

	1mg	5mg	10mg
1 mM	0.9459 mL	4.7293 mL	9.4586 mL
5 mM	0.1892 mL	0.9459 mL	1.8917 mL
10 mM	0.0946 mL	0.4729 mL	0.9459 mL
50 mM	0.0189 mL	0.0946 mL	0.1892 mL

Please select the appropriate solvent to prepare the stock solution, according to the solubility of the product in different solvents. Please use it as soon as possible.

Note: The dilution table applies only to solid products. For liquid products, please calculate the stock solution based on the stated concentration and/or density.

**Inhibitor · Natural Compounds · Compound Libraries · Recombinant Proteins**

This product is for Research Use Only · Not for Human or Veterinary or Therapeutic Use

Tel:781-999-4286 E\_mail:info@targetmol.com Address:34 Washington Street,Wellesley Hills,MA 02481