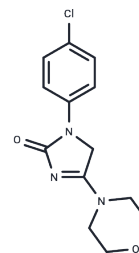


Imepitoin

Chemical Properties

CAS No. :	188116-07-6
Formula:	C13H14ClN3O2
Molecular Weight:	279.72
Storage:	Powder: -20°C for 3 years In solvent: -80°C for 1 year <small>Actual storage temperature shall be subject to the COA.</small>



Biological Description

Description	Imepitoin (AWD 131-138) is a novel low-affinity partial benzodiazepine receptor agonist, exhibiting potent anticonvulsant and anxiolytic properties in rodent models.
Targets(IC50)	GABA Receptor
Kinase Assay	Cell-based determinations of mTOR inhibition: A high-throughput screening cell-based assay is developed using MDA-MB-468 cells to detect mTORC1 and mTORC2 activity. Cells are exposed for 2 hours to increasing concentrations of AZD8055. At the end of the incubation period, cells are fixed, washed, and probed with antibodies against S473 pAkt or against S235/236 phosphorylated S6 (pS6). Levels of phosphorylation are assessed using an Acumen laser scanning cytometer.

Solubility Information

Solubility	DMSO: 13 mg/mL (46.48 mM),Sonication is recommended. (< 1 mg/ml refers to the product slightly soluble or insoluble)
In vivo Formulation	10% DMSO+40% PEG300+5% Tween 80+45% Saline: 1 mg/mL (3.58 mM),Sonication is recommended. <i>Please add the solvents sequentially, clarifying the solution as much as possible before adding the next one. Dissolve by heating and/or sonication if necessary. Working solution is recommended to be prepared and used immediately. The formulation provided above is for reference purposes only. In vivo formulations may vary and should be modified based on specific experimental conditions.</i>

Preparing Stock Solutions

	1mg	5mg	10mg
1 mM	3.575 mL	17.875 mL	35.750 mL
5 mM	0.715 mL	3.575 mL	7.150 mL
10 mM	0.3575 mL	1.7875 mL	3.575 mL
50 mM	0.0715 mL	0.3575 mL	0.715 mL

Please select the appropriate solvent to prepare the stock solution, according to the solubility of the product in different solvents. Please use it as soon as possible.

Note: The dilution table applies only to solid products. For liquid products, please calculate the stock solution based on the stated concentration and/or density.

Reference

Sigel E, et al. Neurosci Lett. 1998 Apr 3;245(2):85-8.

Kaduk J A, Gindhart A M, Gates-Rector S, et al. Crystal structure of imepitoin, C₁₃H₁₄ClN₃O₂. Powder Diffraction. 2022: 1-5.

Inhibitor · Natural Compounds · Compound Libraries · Recombinant Proteins

This product is for Research Use Only · Not for Human or Veterinary or Therapeutic Use

Tel:781-999-4286 E_mail:info@targetmol.com Address:34 Washington Street,Wellesley Hills,MA 02481