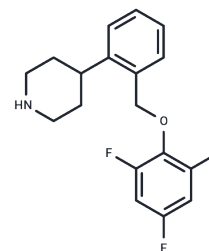


Amprelosetine

Chemical Properties

CAS No. :	1227056-84-9
Formula:	C ₁₈ H ₁₈ F ₃ NO
Molecular Weight:	321.34
Storage:	Powder: -20°C for 3 years In solvent: -80°C for 1 year Actual storage temperature shall be subject to the COA.



Biological Description

Description	Amprelosetine (TD-9855), a norepinephrine reuptake inhibitor, is used to study neurological diseases.
Targets(IC50)	5-HT Receptor, Adrenergic Receptor, Norepinephrine
In vivo	Amprelosetine (TD-9855) is a novel, investigational, selective NET inhibitor. Its >24-h half-life allows once-daily dosing. Persistent elevation of plasma NE levels accompanied by reduced DHPG levels after amprelosetine suggests reduced neuronal reuptake and metabolism of NE in postganglionic efferent sympathetic neurons (5-day escalating doses, followed by 20 weeks of open-label treatment and a 4-week withdrawal).[1]

Preparing Stock Solutions

	1mg	5mg	10mg
1 mM	3.112 mL	15.5598 mL	31.1197 mL
5 mM	0.6224 mL	3.112 mL	6.2239 mL
10 mM	0.3112 mL	1.556 mL	3.112 mL
50 mM	0.0622 mL	0.3112 mL	0.6224 mL

Please select the appropriate solvent to prepare the stock solution, according to the solubility of the product in different solvents. Please use it as soon as possible.

Note: The dilution table applies only to solid products. For liquid products, please calculate the stock solution based on the stated concentration and/or density.

Reference

- Lo A, et al. Pharmacokinetics and pharmacodynamics of amprelosetine, a novel, selective norepinephrine reuptake inhibitor, in symptomatic neurogenic orthostatic hypotension. Clin Auton Res. 2021;31(3):395-403.
- Kanodia J, et al. Pharmacokinetics of Amprelosetine, a Norepinephrine Reuptake Inhibitor, in Healthy Subjects and Adults with Attention-Deficit/Hyperactive Disorder or Fibromyalgia Pain. Clin Pharmacokinet. 2021;60(1):121-131.

Inhibitor · Natural Compounds · Compound Libraries · Recombinant Proteins

This product is for Research Use Only · Not for Human or Veterinary or Therapeutic Use

Tel:781-999-4286 E_mail:info@targetmol.com Address:34 Washington Street,Wellesley Hills,MA 02481