

## Cymal-6

## Chemical Properties

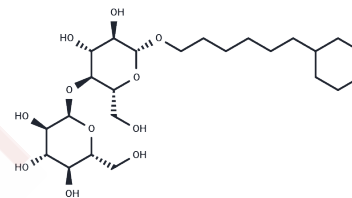
CAS No. : 228579-27-9

Formula: C<sub>24</sub>H<sub>44</sub>O<sub>11</sub>

Molecular Weight: 508.6

Storage: Powder: -20°C for 3 years | In solvent: -80°C for 1 year

Actual storage temperature shall be subject to the COA.



## Biological Description

Description	Cymal-6 (Cyclohexyl-hexyl-β-D-maltoside) is a TEM-1 β-lactamase inhibitor and a glycoside surfactant.
Targets(IC50)	Antibacterial
In vitro	Cymal-6 is an allosteric inhibitor of beta-lactamase with an IC <sub>50</sub> of 100 μM and a K <sub>i</sub> of 40.05 μM. [1]

## Solubility Information

Solubility	DMSO: 200 mg/mL (393.24 mM),Sonication is recommended. (< 1 mg/ml refers to the product slightly soluble or insoluble)
In vivo Formulation	10% DMSO+40% PEG300+5% Tween-80+45% Saline: 3.3 mg/mL (6.49 mM),Sonication is recommended. <i>Please add the solvents sequentially, clarifying the solution as much as possible before adding the next one. Dissolve by heating and/or sonication if necessary. Working solution is recommended to be prepared and used immediately. The formulation provided above is for reference purposes only. In vivo formulations may vary and should be modified based on specific experimental conditions.</i>

### Preparing Stock Solutions

---

	<b>1mg</b>	<b>5mg</b>	<b>10mg</b>
1 mM	1.9662 mL	9.8309 mL	19.6618 mL
5 mM	0.3932 mL	1.9662 mL	3.9324 mL
10 mM	0.1966 mL	0.9831 mL	1.9662 mL
50 mM	0.0393 mL	0.1966 mL	0.3932 mL

---

Please select the appropriate solvent to prepare the stock solution, according to the solubility of the product in different solvents. Please use it as soon as possible.

Note: The dilution table applies only to solid products. For liquid products, please calculate the stock solution based on the stated concentration and/or density.

### Reference

Avci FG, et al. Targeting a hidden site on class A beta-lactamases. J Mol Graph Model. 2018 Sep;84:125-133.

**Inhibitor · Natural Compounds · Compound Libraries · Recombinant Proteins**

This product is for Research Use Only · Not for Human or Veterinary or Therapeutic Use

Tel:781-999-4286 E\_mail:info@targetmol.com Address:34 Washington Street,Wellesley Hills,MA 02481